

Accepted paper – In Press

SARS-CoV-2 infection in pregnancy: a systematic review and meta-analysis of clinical features and pregnancy outcomes

Asma Khalil, MD MRCOG^{1,2}, Erkan Kalafat, MD^{1,3}, Can Benlioglu, MD¹, Pat O'Brien, MBBCh FRCOG^{4,5}, Eddie Morris, MD FRCOG^{4,6}, Tim Draycott, MD FRCOG^{4,7}, Shakila Thangaratinam MD FRCOG⁸, Kirsty Le Doare PhD FRCPCH⁹, Paul Heath, MB BS FRCPCH⁹, Shamez Ladhani, MD^{10,11}, Peter von Dadelszen, DPhil FRCOG¹², Laura A. Magee MD FRCOG¹²

¹Fetal Medicine Unit, St George's Hospital, St George's University of London, UK.

²Vascular Biology Research Centre, Molecular and Clinical Sciences Research Institute, St George's University of London, UK.

³Middle East Technical University, Department of Statistics, Ankara, Turkey.

⁴The Royal College of Obstetricians and Gynaecologists, London, UK.

⁵University College London Hospitals NHS Foundation Trust, London, UK.

⁶Norfolk and Norwich University Hospitals NHS Foundation Trust, Norwich, Norfolk, UK.

⁷North Bristol NHS Trust Department of Women's Health, Westbury on Trym, UK.

⁸Institute of Metabolism and Systems Research, WHO Collaborating Centre for Women's Health, University of Birmingham, Birmingham, UK.

⁹Paediatric Infectious Diseases Research Group and Vaccine Institute, Institute of Infection and Immunity, St George's University of London, London, UK.

¹⁰ Immunisation and Countermeasures Division, Public Health England.

¹¹British Paediatric Surveillance Unit, Royal College of Pediatrics and Child Health.

¹²School of Life Course Sciences, Faculty of Life Sciences and Medicine, King's College
London, London, United Kingdom.

Corresponding author:

Professor Asma Khalil MRCOG MD MSc (Epi) DFRS Dip (GUM)

Address:

Fetal Medicine Unit

Department of Obstetrics and Gynaecology

St. George's University Hospitals NHS Foundation Trust

Blackshaw Road

London SW17 0QT

United Kingdom.

Email address: akhalil@sgul.ac.uk

ABSTRACT

BACKGROUND: Perform a systematic review and meta-analysis of SARS-CoV-2 infection and pregnancy.

METHODS: Databases (Medline, Embase, Clinicaltrials.gov, Cochrane Library) were searched electronically on 6th April and updated regularly until 8th June 2020. Reports of pregnant women with reverse transcription PCR (RT-PCR) confirmed COVID-19 were included. Meta-analytical proportion summaries and meta-regression analyses for key clinical outcomes are provided.

FINDINGS: 86 studies were included, 17 studies (2567 pregnancies) in the quantitative synthesis; other small case series and case reports were used to extract rarely-reported events and outcome. Most women (73.9%) were in the third trimester; 52.4% have delivered, half by caesarean section (48.3%). The proportion of Black, Asian or minority ethnic group membership (50.8%); obesity (38.2%), and chronic co-morbidities (32.5%) were high. The most commonly reported clinical symptoms were fever (63.3%), cough (71.4%) and dyspnoea (34.4%). The commonest laboratory abnormalities were raised CRP or procalcitonin (54.0%), lymphopenia (34.2%) and elevated transaminases (16.0%). Preterm birth before 37 weeks' gestation was common (21.8%), usually medically-indicated (18.4%). Maternal intensive care unit admission was required in 7.0%, with intubation in 3.4%. Maternal mortality was uncommon (~1%). Maternal intensive care admission was higher in cohorts with higher rates of co-morbidities (beta=0.007, p<0.05) and maternal age over 35 years (beta=0.007, p<0.01). Maternal mortality was higher in cohorts with higher rates of antiviral drug use (beta=0.03, p<0.001), likely due to residual confounding. Neonatal nasopharyngeal swab RT-PCR was positive in 1.4%.

INTERPRETATION: The risk of iatrogenic preterm birth and caesarean delivery was increased. The available evidence is reassuring, suggesting that maternal morbidity is similar

to that of women of reproductive age. Vertical transmission of the virus probably occurs, albeit in a small proportion of cases.

FUNDING: N/A

INTRODUCTION

The outbreak of a novel coronavirus (SARS-CoV-2 which causes COVID-19) was first reported in Wuhan, China in December 2019, although it is likely that cases appeared in mid-November. Within a few weeks, the virus had spread rapidly throughout China, and within a month, worldwide. On the 11th of March 2020, this SARS-CoV-2 outbreak was recognised as a pandemic by the World Health Organization (WHO).¹ As of the 1st June 2020, over 6 million cases have been diagnosed in 210 countries, with a total of 379,728 deaths.

Previous smaller coronavirus outbreaks (i.e., Severe Acute Respiratory Syndrome [SARS] and Middle East Respiratory Syndrome [MERS]²⁻⁴) have associated infection in pregnancy with more serious illness and preterm birth, although information has been primarily from small observational studies and case series.²⁻⁴ Concern about the implications of COVID-19 in pregnancy is further fuelled by its reproductive capacity, the scale of the outbreak, and the societal response.

A recent systematic review has reported an aggregate summary of all coronavirus-related illnesses (SARS and MERS included) and concluded that the risk of miscarriage, preeclampsia, preterm birth, and perinatal death is higher.⁵ However, this review included few data for outcomes related to SARS-CoV-2 and emphasised the rapid rate of accumulating evidence and the need for updates.

We aimed to systematically review the available literature on COVID-19 and pregnancy, to provide comprehensive data to care-providers, pregnant women and their families, inform national and international guidelines, and direct the course of ongoing and future studies.^{6,7}

METHODS

This review was performed according to established methodology for systematic reviews and meta-analysis. Medline, Embase, Clinicaltrials.gov and Cochrane Library databases were

searched electronically (April 6th 2020) and updated on April 13th 2020 and May 7th 2020, utilising combinations of the relevant medical subject heading (MeSH) terms, key words, and word variants for “COVID-19” and “pregnancy” (Supplementary Table 1). After May 7th 2020, the literature update was performed manually on a weekly basis until June 8st 2020. Grey literature was not searched as double-reporting could not be ascertained. Reference lists of relevant articles and reviews were hand-searched for additional reports. PRISMA and MOOSE guidelines were followed.^{8,9} The study was registered with the PROSPERO database (Registration number: CRD42020178004).

Study selection and data collection

Maternal outcomes included the clinical COVID-19 presentation and associated laboratory and imaging findings, maternal complications, and treatment received. Obstetric complications included preterm birth, stillbirth, mode of delivery and fetal distress. Perinatal outcomes included perinatal death and evidence of vertical transmission. Any outcome not explicitly mentioned was considered not to have been reported. For laboratory parameters, reported local reference ranges were used to define abnormal.

Case reports, case series, cohort, case-control studies and randomised controlled trials were eligible for inclusion. Studies that reported on women with PCR confirmed SARS-CoV-2 infection were eligible for inclusion. Clinically diagnosed cases, conference abstracts, expert opinions, and critical appraisals were excluded. Two authors (EK, CB) reviewed all abstracts independently. Agreement regarding potential relevance was reached by consensus (AK, EK, CB); full text copies of those papers were obtained and the same two reviewers independently extracted relevant data regarding study characteristics and maternal and perinatal outcomes. Inconsistencies were discussed by the reviewers and consensus reached or by discussion with a third author (AK). If more than one study was published on the same patients with identical endpoints, the report containing the most comprehensive (larger patient numbers) information was included. Individual cases were cross-checked with

reports from the same hospital, whenever possible. If there was suspicion that a case report or series was subject to double-reporting, and this could not be confirmed, the publication was excluded; this included aggregate reports from multiple centres which previously published case series.

Quality assessment

Quality assessment of included studies was performed using the Newcastle-Ottawa Scale (NOS) or modified NOS for case-control, cohort studies or case series,^{10,11} according to selection of the study groups (score 0-4), comparability of the groups (score 0-2), and ascertainment of outcomes (score 0-3). Two authors (EK, CB) scored all studies independently. Agreement was reached by consensus and a third author was involved (AK) in disputed cases.

Statistical Analysis

For women infected with SARS-CoV-2 in pregnancy, demographic and disease characteristics were analysed descriptively. A random-effect meta-analysis of proportions was used to estimate the pooled rates of each outcome in all pregnancies, and a random-intercept logistic regression meta-analysis with continuity correction used for outcomes where there was at least one event in available studies. Proportion meta-analysis was performed for studies (sample size >15) that reported on all available cases over a defined time period. A narrative synthesis was undertaken when few events were reported from small case series. Between-study heterogeneity was explored using the I^2 statistic, with >50% reflecting substantial heterogeneity. In some studies reporting only summary statistics (mean and standard deviation or median and interquartile range), Monte-Carlo simulations were employed to estimate the proportion of the outcome according to the desired cut-off. Normality was assumed if the data were reported as mean and standard deviation. Normality was assumed for data reported as median and interquartile range only when the distribution was symmetrical. Meta-regression analyses were conducted for a few key clinical outcomes

(maternal intensive care unit admission, maternal death, perinatal death, neonatal PCR positivity), if meta-analytical summaries indicated significant heterogeneity. All potential confounders were tested and those that explain the heterogeneity (p value for beta <0.05 and p value for residual heterogeneity >0.05) were reported. Potential publication bias was assessed using Egger's test and the creation of funnel plots for visual inspection when and if enough studies ($N>10$) were available.¹¹ Analyses were conducted using R for statistical computing software and meta package.

RESULTS

General characteristics

Of 283 articles identified, 114 full manuscripts were assessed further for eligibility and 86 studies were included (Figure 1, Supplementary Table 2).¹²⁻⁹³ Of those, 17 studies (2567 pregnancies) that report on all available cases over a definite time period and sufficiently large sample size ($N>15$) were included in the quantitative synthesis.¹²⁻²⁸ Other small case series and case reports were used to extract rarely reported events and outcome such as maternal or neonatal mortality, evidence for vertical transmission or placental pathologies.²⁹⁻⁹⁷ Quality was moderate to high for the included studies (Table 1). The main weaknesses were retrospective design and inconsistent definition and reporting of outcomes. There were five reports from national registries (UK, Netherlands, China, France and Brazil), while the rest were regional reports from other countries (Italy, USA, Spain) (Table 1). One study strictly included only women with severe and critical COVID-19.²⁰ Uptake of antiviral treatments and the drug regimens used varied significantly among the countries (Table 1). The included outcomes from individual studies can be found in Table 1. Publication bias was assessed for outcome with more than 10 included studies (Supplementary Table 3). The funnel plot asymmetry tests suggested possible publication bias in maternal intensive care unit admission (bias -2.61, $p=0.013$) and maternal death (bias -2.85, $p=0.001$). Two reports

from China had risk of overlap and the study with more comprehensive reporting or larger numbers was used for each outcome.^{16,17}

Clinical symptoms, laboratory and imaging findings

Table 2 presents pooled proportions for our primary analysis of 17 reports. Most women presented with fever and cough, although estimates varied substantially between reports. Some women had dyspnoea (~35%), had the characteristic anosmia, or non-specific complaints of myalgia, fatigue, or headache (~15-20%). Less than one fifth were asymptomatic, although this too varied substantially between reports. Black, Asian or ethnic minorities (BAME) were common in the included reports (~50%). The rates of obesity (38.2%) and comorbidities were also high (32.5%) (Figure 2). Most women (~75%) were in the third trimester or postpartum at the time of reporting. Investigations revealed that most had raised inflammatory markers of C-reactive protein or procalcitonin, and around one third had lymphopenia; raised liver enzymes complicated 16.0%. Thrombocytopenia was rare. Raised D-Dimer levels were very common (~85%) but reports did not include pregnancy-specific normal ranges.

Maternal complications

Few women had evidence of co-infection, bacterial or viral. Admission to intensive care unit occurred in ~7% of women, with or without respiratory support, with the upper 95% CI 11% (Figure 3). 43 of 2468 women died with a pooled proportion of 0.9% according to inverse variance proportion regression meta-analysis. Invasive mechanical ventilation support and extracorporeal membrane oxygenation were uncommon (3.4% and 0.7%, respectively).

Obstetric and perinatal outcomes

Preterm birth, primarily iatrogenic, was common, in around one fifth of cases, with variability between studies (Figure 4). Half of births were by caesarean section (Figure 4). While few studies reported indications, the most common indication was not fetal distress, but related to

COVID-19, severe maternal pneumonia, or fear of sudden maternal decompensation. The spontaneous preterm delivery rate was within expected ranges. Perinatal deaths occurred in less than 1%; there were twelve stillbirths and four neonatal deaths. The rate of neonatal SARS-CoV-2 positivity was ~1-2% (Figure 5).

Meta-regression analysis

Significant heterogeneity was observed in three of the four critical outcomes (maternal intensive care unit admission, maternal death, neonatal PCR positivity). Meta-regression analysis showed that the statistical heterogeneity in maternal intensive care unit admission was explained by the presence of maternal co-morbidities (beta=0.007, $p<0.05$) and maternal age over 35 years (beta=0.007, $p<0.01$). Heterogeneity in maternal death was explained by the use of antiviral treatment (beta=0.026, $p<0.001$). Neonatal SARS-CoV-2 PCR positivity was explained by spontaneous preterm delivery (beta=0.19, $p<0.05$) (Supplementary Table 4). Maternal admission to intensive care unit was more common in cohorts with a higher rate of maternal co-morbidities and older maternal age. Neonatal SARS-CoV-2 positivity was higher in cohorts with higher spontaneous preterm birth rate. Maternal mortality appeared to be higher in cohorts with more reported use of antiviral treatment. However, this is likely to be explained by a residual confounder not accounted for in this analysis. Third trimester pregnancy, BAME background and obesity did not adequately explain the heterogeneity in maternal intensive care unit admission, maternal death or neonatal SARS-CoV-2 positivity.

Rare outcome events reported in small case series and case reports.

Analysis of conception products that may be associated with vertical transmission were reported in a minority of cases (placenta: 10.7%, amniotic fluid: 5.5%, cord blood: 6.2%; Supplementary Table 5). Maternal bodily fluid PCR positivity was rare (vaginal swab: 0%, stool: 12.5%, breast milk: 6.7%). Neonatal and maternal mortality figures were higher (2-3%) in case reports owing to reporting bias. There were 65 placental pathology reports available,

with inflammatory changes documented in one fifth (Supplementary Table 6). 42 placental pathology reports were available for maternal or fetal malperfusion findings, which were very common (78.6%).

DISCUSSION

In this systematic review, we summarise the published, peer-reviewed information about women with confirmed COVID-19 in pregnancy. Women usually presented with fever and cough. The prevalence of BAME background and maternal comorbidities was high. Most show biochemical evidence of inflammation, mainly lymphopenia. Many received antiviral therapy and few have been admitted to intensive care. Pregnancy outcomes were generally good, although there is little information about early pregnancy exposure, but iatrogenic preterm birth was common. Perinatal and maternal mortality were rare (<1%). Neonatal SARS-CoV-2 PCR positivity was rare but vertical transmission seems probable as the information on the SARS-CoV-2 positivity of other biological samples (maternal, conception products, fetal or neonatal) accrues.

This comprehensive search was without language restriction, yielding a large number of included studies with 2567 pregnancies in the quantitative synthesis. We strove to identify potential duplicate reports by cross-checking cases reported from the same centres and, when there was doubt, excluded those studies. We performed proportion meta-analysis for outcomes with sufficiently large cohorts, while we provided narrative summaries for rare outcomes from small case series and reports. Finally, we performed meta-regression analyses to explore the heterogeneity in critical clinical outcomes

The major limitations of this review are the retrospective design (especially case series and reports), the lack of universal testing for SARS-CoV-2 (given that up to 90% of pregnant women who are infected with SARS-CoV-2 are asymptomatic⁹⁸), and the lack of standardised antenatal surveillance, management, timing and mode of delivery of women with COVID-19. The lack of standardised symptom and outcome queries and reporting did

not allow for reporting mutually exclusive categories. The transformation of maternity care services worldwide may result in indirect effects of COVID-19 on maternal and perinatal outcomes, and these are currently unmeasured. A significant proportion of pregnancies were affected by COVID-19 in the third trimester and then delivered, so we were unable to comment meaningfully on outcomes related to early pregnancy exposure or those that take time to develop, such as fetal growth restriction. Despite detecting significant publication bias for only two investigated outcomes, it is likely that publication bias is a problem for all reported outcomes. However, there is no methodological or statistical way of preventing such bias at this time, and this must be acknowledged as a limitation. Finally, there are press reports of adverse outcomes that have not yet appeared in the peer reviewed literature, so serious complications such as maternal death or stillbirth are likely currently under-reported; however, we excluded press reports because we would be unable to ascertain duplicate cases.

Data from non-pregnant adults in China have described the most common presenting symptoms of COVID-19 as fever and cough,⁹⁹ as in our review. However, in the UK, patient-reported outcomes from confirmed cases have highlighted greater prominence of fatigue (80%) and loss of taste and smell (59%), along with persistent cough (58%) and dyspnoea (49%); fever was less prominent (32%).¹⁰⁰ These differences could relate to unstructured assessment of symptoms, varying criteria for formal SARS-CoV-2 testing, or pregnancy-induced changes in the immune system.

The need for intensive care in pregnant women with COVID-19 in our review is slightly higher than that for infected non-pregnant women of reproductive age, thought to be no higher than 4.2%.¹⁰¹ While reassuring, the proportion of women admitted to an intensive care unit was affected by the presence of maternal comorbidities and possibly by additional confounders not accounted for in this review. Furthermore, there was significant publication bias in the analysis, intensive care unit admission criteria was not defined and may vary between studies. Therefore, it is not possible to verify or refute an increased risk of intensive care unit

admission for pregnant women. While national programs investigating maternal deaths will report the relevant data, this will take time and will not inform care during the current pandemic.

This review provides information required to guide current care during the SARS-CoV-2 pandemic. Key knowledge gaps include the relationship between infection and outcomes for all pregnant women, based on universal (not symptoms-based) testing and structured enquiry about symptoms. We lack information about meaningful numbers of women infected in early pregnancy and about the indications for iatrogenic preterm delivery and caesarean section, particularly in relation to local practice. We lack information on the indirect effects of COVID-19 on pregnancy outcomes; given the dramatic changes seen in maternity care services in order to deliver government-mandated social distancing and lockdown for non-essential services, these effects on pregnancy outcomes may be as great, if not greater, than the direct effects of the virus. The relative increase in stillbirth could be related to direct effects of SARS-CoV-2 and/or indirect effects of COVID-19 (i.e., maternal care-seeking and/or changes in maternity care service delivery). Finally, we need to support comprehensive assessment of potential vertical transmission to understand whether it occurs and, if so, how and with what frequency. A new study sponsored by Public Health England to address these questions is ongoing (www.pericovid.com); whenever possible, serum samples from neonates born to SARS-CoV-2 positive mothers should be stored until robust immunological testing is available, as advised by the Royal College of Paediatrics and Child Health, UK. Knowledge of safety and protective immunity will inform the role for COVID-19 vaccines in pregnant women. It is also necessary to put in place mechanisms for long-term follow-up of babies of infected mothers.

The evidence to date is reassuring with regards to the risks of COVID-19 in pregnancy. The risk of maternal intensive care unit admission is likely to be similar to that in other women of reproductive age when summary aggregates are compared to available data from Centers for Disease Control and Prevention from the United States ¹⁰¹. While pregnancy outcomes

are generally good, iatrogenic preterm birth appears to be increased, and vertical transmission is a possibility for which we need more evidence. Importantly, a critical gap in our knowledge is the impact on pregnancy outcomes of the COVID-19-related transformation of maternity care services.

FUNDING

No funding received

ACKNOWLEDGEMENTS

None

DECLARATION OF INTERESTS

Dr. Morris is the President and Trustee of the Royal College of Obstetricians and Gynaecologists. He is a Trustee of the British Menopause Society and the Chairman of the Baby Lifeline Multiprofessional Advisory Panel.

CONTRIBUTION OF EACH AUTHOR

AK, EK, CB conducted the literature search, study selection and data extraction and analysis. All authors contributed to the data interpretation, writing and editing of the manuscript.

All authors have read and agreed to the published version of the manuscript.

REFERENCES

1. World Health Organization. WHO Timeline - COVID-19. 2020. [online] Who.int. Available at: <<https://www.who.int/news-room/detail/08-04-2020-who-timeline---covid-19>> [Accessed 10 April 2020].
2. Wong SF, Chow KM, Leung TN, et al. Pregnancy and perinatal outcomes of women with severe acute respiratory syndrome. *Am J Obstet Gynecol* 2004;191:292-7. doi:10.1016/j.ajog.2003.11.019
3. Park MH, Kim HR, Choi DH, Sung JH, Kim JH. Emergency cesarean section in an epidemic of the middle east respiratory syndrome: A case report. *Korean J Anesthesiol* 2016;69:287-91. doi:10.4097/kjae.2016.69.3.287
4. Lam CM, Wong SF, Leung TN, et al. A case-controlled study comparing clinical course and outcomes of pregnant and non-pregnant women with severe acute respiratory syndrome. *BJOG* 2004;111:771-4. doi:10.1111/j.1471-0528.2004.00199.x
5. Di Mascio D, Khalil A, Saccone G, et al. Outcome of coronavirus spectrum infections (SARS, MERS, COVID-19) during pregnancy: A systematic review and meta-analysis. *Am J Obstet Gynecol MFM* 2020:100107. doi:10.1016/j.ajogmf.2020.100107
6. Rasmussen SA, Smulian JC, Lednicky JA, Wen TS, Jamieson DJ. Coronavirus disease 2019 (COVID-19) and pregnancy: What obstetricians need to know. *Am J Obstet Gynecol* doi:10.1016/j.ajog.2020.02.017
7. Poon LC, Yang H, Lee JCS, et al. ISUOG interim guidance on 2019 novel coronavirus infection during pregnancy and puerperium: Information for healthcare professionals. *Ultrasound Obstet Gynecol* 2020 doi:10.1002/uog.22013
8. Shamseer L, Moher D, Clarke M, et al. Preferred reporting items for systematic review and meta-analysis protocols (prisma-p) 2015: Elaboration and explanation. *BMJ* 2015;349:g7647. doi:10.1136/bmj.g7647
9. Stroup DF, Berlin JA, Morton SC, et al: Group ftM-aOOSiE. Meta-analysis of observational studies in epidemiology - a proposal for reporting. *JAMA* 2000;283:2008-12. doi:10.1001/jama.283.15.2008
10. Ohri.ca. 2020. Ottawa Hospital Research Institute. [online] Available at: <http://www.ohri.ca/programs/clinical_epidemiology/oxford.asp> [Accessed 10 April 2020].
11. Murad MH, Sultan S, Haffar S, Bazerbachi F. Methodological quality and synthesis of case series and case reports. *BMJ Evidence-Based Medicine* 2018;23:60-3. doi:10.1136/bmjebm-2017-110853
12. Pereira A, Cruz-Melguizo S, Adrien M, Fuentes L, Marin E, Perez-Medina T. Clinical course of coronavirus disease-2019 (covid-19) in pregnancy. *Acta Obstet Gynecol Scand.* 2020 doi:10.1111/aogs.13921
13. Duffy CR, Hart JM, Modest AM, Hacker MR, Golen T, Li Y, Zera C, Shinker SA, Mehrotra P, Zash R, Wylie BJ. Lymphopenia and severe acute respiratory syndrome coronavirus 2 (sars-cov-2) infection among hospitalized obstetric patients. *Obstet Gynecol.* 2020 doi:10.1097/AOG.0000000000003984
14. Lokken EM, Walker CL, Delaney S, Kachikis A, Kretzer NM, Erickson A, Resnick R, Vanderhoeven J, Hwang JK, Barnhart N, Rah J, McCartney SA, Ma KK, Huebner EM, Thomas C, Sheng JS, Paek BW, Retzlaff K, Kline CR, Munson J, Blain M, Lacourse SM, Deutsch G, Adams Waldorf K. Clinical characteristics of 46 pregnant women with a sars-cov-2 infection in washington state. *Am J Obstet Gynecol.* 2020 doi:10.1016/j.ajog.2020.05.031
15. Qadri F, Mariona F. Pregnancy affected by sars-cov-2 infection: A flash report from michigan. *J Matern Fetal Neonatal Med.* 2020:1-3. doi:10.1080/14767058.2020.1765334

16. Yan J, Guo J, Fan C, Juan J, Yu X, Li J, Feng L, Li C, Chen H, Qiao Y, Lei D, Wang C, Xiong G, Xiao F, He W, Pang Q, Hu X, Wang S, Chen D, Zhang Y, Poon LC, Yang H. Coronavirus disease 2019 in pregnant women: A report based on 116 cases. *Am J Obstet Gynecol.* 2020 doi:10.1016/j.ajog.2020.04.014
17. Chen L, Li Q, Zheng D, Jiang H, Wei Y, Zou L, Feng L, Xiong G, Sun G, Wang H, Zhao Y, Qiao J. Clinical characteristics of pregnant women with covid-19 in wuhan, china. *N Engl J Med.* 2020 doi:10.1056/NEJMc2009226
18. Andrikopoulou M, Madden N, Wen T, Aubey JJ, Aziz A, Baptiste CD, Breslin N, D'Alton ME, Fuchs KM, Goffman D, Gyamfi-Bannerman C, Matseoane-Peterssen DN, Miller RS, Sheen JJ, Simpson LL, Sutton D, Zork N, Friedman AM. Symptoms and critical illness among obstetric patients with coronavirus disease 2019 (covid-19) infection. *Obstet Gynecol.* 2020 doi:10.1097/AOG.0000000000003996
19. Knight M, Bunch K, Vousden N, Morris E, Simpson N, Gale C, O'Brien P, Quigley M, Brocklehurst P, Kurinczuk J. Characteristics and outcomes of pregnant women hospitalised with confirmed SARS-CoV-2 infection in the UK: a national cohort study using the UK Obstetric Surveillance System (UKOSS). *BMJ.* 2020 [Accepted, In press]
20. Pierce-Williams RAM, Burd J, Felder L, Khoury R, Bernstein PS, Avila K, Penfield CA, Roman AS, DeBolt CA, Stone JL, Bianco A, Kern-Goldberger AR, Hirshberg A, Srinivas SK, Jayakumaran JS, Brandt JS, Anastasio H, Birsner M, O'Brien DS, Sedev HM, Dolin CD, Schnettler WT, Suhag A, Ahluwalia S, Navathe RS, Khalifeh A, Anderson K, Berghella V. Clinical course of severe and critical covid-19 in hospitalized pregnancies: A us cohort study. *Am J Obstet Gynecol MFM.* 2020:100134. doi:10.1016/j.ajogmf.2020.100134
21. Savasi VM, Parisi F, Patane L, Ferrazzi E, Frigerio L, Pellegrino A, Spinillo A, Tateo S, Ottoboni M, Veronese P, Petraglia F, Vergani P, Facchinetti F, Spazzini D, Cetin I. Clinical findings and disease severity in hospitalized pregnant women with coronavirus disease 2019 (covid-19). *Obstet Gynecol.* 2020 doi:10.1097/AOG.0000000000003979
22. London V, McLaren R, Jr., Atallah F, Cepeda C, McCalla S, Fisher N, Stein JL, Haberman S, Minkoff H. The relationship between status at presentation and outcomes among pregnant women with covid-19. *Am J Perinatol.* 2020 doi:10.1055/s-0040-1712164
23. NVOG. 2020. *Update Registratie COVID-19 Positieve Zwangeren In Nethoss | NVOG.* [online] Available at: <<https://www.nvog.nl/actueel/registratie-van-covid-19-positieve-zwangeren-in-nethoss/>> [Accessed 7 June 2020]. [In Dutch]
24. Saude.gov.br. 2020. [online] Available at: <<https://www.saude.gov.br/images/pdf/2020/May/29/2020-05-25---BEE17---Boletim-do-COE.pdf>> [Accessed 29 May 2020]. [In Portuguese]
25. Kayem G, Alessandrini V, Azria E, Blanc J, Bohec C, Bornes M, Bretelle F, Ceccaldi P-F, Chalet Y, Chauleur C, Cordier A-G, Deruelle P, Desbrière R, Doret M, Dreyfus M, Driessen M, Fermaut M, Gallot D, Garabédian C, Huissoud C, Lecarpentier E, Luton D, Morel O, Perrotin F, Picone O, Rozenberg P, Schmitz T, Sentilhes L, Sroussi J, Vayssière C, Verspyck E, Vivanti AJ, Winer N. A snapshot of the covid-19 pandemic among pregnant women in france. *Journal of Gynecology Obstetrics and Human Reproduction.* 2020:101826. doi:<https://doi.org/10.1016/j.jogoh.2020.101826>
26. Romagano MP, Guerrero K, Spillane N, Kayaalp E, Smilen SW, Alvarez M, Alvarez-Perez J, Francis Kim A, Aschner J, Al-Khan A. Perinatal outcomes in critically ill pregnant women with covid-19. *American Journal of Obstetrics & Gynecology MFM.* 2020:100151. doi:<https://doi.org/10.1016/j.ajogmf.2020.100151>
27. Mendoza M, Garcia-Ruiz I, Maiz N, Rodo C, Garcia-Manau P, Serrano B, Lopez-Martinez RM, Balcells J, Fernandez-Hidalgo N, Carreras E, Suy A. Preeclampsia-like syndrome induced by severe covid-19: A prospective observational study. *BJOG: An*

- International Journal of Obstetrics & Gynaecology*. 2020;n/a doi:10.1111/1471-0528.16339
28. Goldfarb IT, Clapp MA, Soffer MD, Shook LL, Rushfirth K, Edlow AG, Boatman AA, Kaimal AJ, Barth WH, Jr., Bryant AS. Prevalence and severity of coronavirus disease 2019 (covid-19) illness in symptomatic pregnant and postpartum women stratified by hispanic ethnicity. *Obstet Gynecol*. 2020 doi:10.1097/aog.0000000000004005
 29. Ahmed I, Azhar A, Eltaweel N, Tan BK. First Covid-19 maternal mortality in the UK associated with thrombotic complications. *Br J Haematol* [Internet]. 2020;bjh.16849. Available from: <https://onlinelibrary.wiley.com/doi/abs/10.1111/bjh.16849>
 30. Alzamora MC, Paredes T, Caceres D, Webb CM, Valdez LM, La Rosa M. Severe COVID-19 during Pregnancy and Possible Vertical Transmission. *Am J Perinatol*. 2020;1(212).
 31. Anderson J, Schauer J, Bryant S, Graves CR. The use of convalescent plasma therapy and remdesivir in the successful management of a critically ill obstetric patient with novel coronavirus 2019 infection: A case report. *Case Reports Women's Heal* [Internet]. 2020;e00221. Available from: <https://doi.org/10.1016/j.crwh.2020.e00221>
 32. Baergen RN, Heller DS. Placental Pathology in Covid-19 Positive Mothers: Preliminary Findings. *Pediatr Dev Pathol*. 2020;23(3):177–80.
 33. Baud D, Greub G, Favre G, Gengler C, Jaton K, Dubruc E, et al. Second-Trimester Miscarriage in a Pregnant Woman with SARS-CoV-2 Infection. *JAMA - J Am Med Assoc*. 2020;1–3.
 34. Browne PC, Linfert JB, Perez-Jorge E. Successful Treatment of Preterm Labor in Association with Acute COVID-19 Infection [published online ahead of print, 2020 Apr 24]. *Am J Perinatol*. 2020;10.1055/s-0040-1709993. doi:10.1055/s-0040-1709993
 35. Blauvelt CA, Chiu C, Donovan AL, Prael M, Shimotake TK, George RB, et al. Acute Respiratory Distress Syndrome in a Preterm Pregnant Patient With Coronavirus Disease 2019 (COVID-19). *Obstet Gynecol*. 2020;00(00).
 36. Buonsenso D, Raffaelli F, Tamburrini E, Biasucci DG, Salvi S, Smargiassi A, et al. Clinical role of lung ultrasound for the diagnosis and monitoring of COVID -19 pneumonia in pregnant women. *Ultrasound Obstet Gynecol* [Internet]. 2020 Apr 26;uog.22055. Available from: <https://onlinelibrary.wiley.com/doi/abs/10.1002/uog.22055>
 37. Buonsenso D, Costa S, Sanguinetti M, Cattani P, Posteraro B, Marchetti S, et al. Neonatal Late Onset Infection with Severe Acute Respiratory Syndrome Coronavirus 2. *Am J Perinatol*. 2020;1(212).
 38. Carosso A, Cosma S, Borella F, Marozio L, Coscia A, Ghisetti V, et al. Pre-labor anorectal swab for SARS-CoV-2 in COVID-19 pregnant patients: is it time to think about it? *Eur J Obstet Gynecol Reprod Biol* [Internet]. 2020;(2019):2019–20. Available from: <https://doi.org/10.1016/j.ejogrb.2020.04.023>
 39. Chen H, Guo J, Wang C, Luo F, Yu X, Zhang W, et al. Clinical characteristics and intrauterine vertical transmission potential of COVID-19 infection in nine pregnant women: a retrospective review of medical records. *Lancet* [Internet]. 2020 Mar;395(10226):809–15. Available from: [http://dx.doi.org/10.1016/S0140-6736\(20\)30360-3](http://dx.doi.org/10.1016/S0140-6736(20)30360-3)
 40. Chen S, Huang B, Luo DJ, Li X, Yang F, Zhao Y, et al. [Pregnant women with new coronavirus infection: a clinical characteristics and placental pathological analysis of three cases]. *Zhonghua bing li xue za zhi = Chinese J Pathol* [Internet]. 2020;49(0):E005. Available from: <http://www.ncbi.nlm.nih.gov/pubmed/32114744>
 41. Chen S, Liao E, Cao D, Gao Y, Sun G, Shao Y. Clinical analysis of pregnant women with 2019 novel coronavirus pneumonia. *J Med Virol* [Internet]. 2020;0–2. Available from: <https://doi.org/10.1002/jmv.25789>
 42. Cooke WR, Billett A, Gleeson S, Jacques A, Place K, Siddall J, et al. SARS-CoV-2 infection in very preterm pregnancy: Experiences from two cases. *Eur J Obstet*

- Gynecol Reprod Biol [Internet]. 2020;2115(20). Available from: <https://doi.org/10.1016/j.ejogrb.2020.05.025>
43. Dong L, Tian J, He S, Zhu C, Wang J, Liu C, et al. Possible Vertical Transmission of SARS-CoV-2 From an Infected Mother to Her Newborn. *JAMA* [Internet]. 2020 Mar 26;E1–3. Available from: <https://jamanetwork.com/journals/jama/fullarticle/2763853>
 44. Doria M, Peixinho C, Laranjo M, Varejao AM, Silva PT. Covid-19 during pregnancy: A case series from an universally tested population from the north of Portugal, *Eur J Obstet Gynecol* (2020).
 45. Dumpa V, Kamity R, Vinci AN, Noyola E, Noor A. Neonatal Coronavirus 2019 (COVID-19) Infection: A Case Report and Review of Literature. *Cureus*. 2020;2019(5).
 46. Fan C, Lei D, Fang C, Li C, Wang M, Liu Y, et al. Perinatal Transmission of COVID-19 Associated SARS-CoV-2: Should We Worry? Intergovernmental Panel on Climate Change, editor. *Clin Infect Dis* [Internet]. 2020 Mar 17;53(9):1–30. Available from: <file:///C:/Users/User/Downloads/fvm939e.pdf>
 47. Gidlöf S, Savchenko J, Brune T, Josefsson H. COVID-19 in pregnancy with comorbidities: More liberal testing strategy is needed. *Acta Obstet Gynecol Scand* [Internet]. 2020 Apr 17;aogs.13862. Available from: <https://ejournal3.undip.ac.id/index.php/jamt/article/view/5101>
 48. González Romero D, Ocampo Pérez J, González Bautista L, Santana-Cabrera L. Pregnancy and perinatal outcome of a woman with COVID-19 infection. *Rev Clin Esp*. 2020;
 49. Govind A, Essien S, Karthikeyan A, Fakokunde A, Janga D, Yoong W, et al. Re: Novel Coronavirus COVID-19 in late pregnancy: Outcomes of first nine cases in an inner city London hospital. *Eur J Obstet Gynecol Reprod Biol*. 2020;(2019):3–5.
 50. Groß R, Conzelmann C, Müller JA, Stenger S, Steinhart K, Kirchhoff F, et al. Detection of SARS-CoV-2 in human breastmilk. *Lancet* (London, England) [Internet]. 2020;6736(20). Available from: <http://www.ncbi.nlm.nih.gov/pubmed/32446324>
<http://www.pubmedcentral.nih.gov/articlerender.fcgi?artid=PMC7241971>
 51. Hantoushzadeh S, Shamshirsaz AA, Aleyasin A, et al. Maternal death due to COVID-19 [published online ahead of print, 2020 Apr 28]. *Am J Obstet Gynecol*. 2020;S0002-9378(20)30516-0. doi:10.1016/j.ajog.2020.04.030
 52. Hirshberg A, Kern-Goldberger AR, Levine LD, Pierce-Williams R, Short WR, Parry S, et al. Care of critically ill pregnant patients with coronavirus disease 2019: a case series. *Am J Obstet Gynecol* [Internet]. 2020 May;3(2):54–67. Available from: <http://repositorio.unan.edu.ni/2986/1/5624.pdf>
 53. Hong L, Smith N, Keerthy M, Lee-Griffith M, Garcia R, Shaman M, et al. Severe COVID-19 infection in pregnancy requiring intubation without preterm delivery: A case report. *Case Reports Women's Heal* [Internet]. 2020;27:e00217. Available from: <https://doi.org/10.1016/j.crwh.2020.e00217>
 54. Inchingolo R, Smargiassi A, Moro F, Buonsenso D, Salvi S, Del Giacomo P, et al. The Diagnosis of Pneumonia in a Pregnant Woman with COVID-19 Using Maternal Lung Ultrasound. *Am J Obstet Gynecol* [Internet]. 2020; Available from: <https://doi.org/10.1016/j.ajog.2020.04.020>
 55. Iqbal SN, Overcash R, Mokhtari N, Saeed H, Gold S, Auguste T, et al. An uncomplicated delivery in a patient with Covid-19 in the United States. *N Engl J Med*. 2020;382(16):1–3.
 56. Joudi N, Henkel A, Lock WS, Lyell D. Preeclampsia Treatment in SARS-CoV-2. *Am J Obstet Gynecol MFM* [Internet]. 2020 May;(925):100146. Available from: <https://linkinghub.elsevier.com/retrieve/pii/S2589933320300902>
 57. Juusela A, Nazir M, Gimovsky M. Two Cases of COVID-19 Related Cardiomyopathy in Pregnancy. *Am J Obstet Gynecol MFM* [Internet]. 2020 Apr;100113. Available from: <https://doi.org/10.1016/j.ajogmf.2020.100113>

58. Kalafat E, Yaprak E, Cinar G, Varli B, Ozisik S, Uzun C, et al. Lung ultrasound and computed tomographic findings in pregnant woman with COVID-19. *Ultrasound Obstet Gynecol.* 2020;1–12.
59. Khan S, Peng L, Siddique R, Nabi G, Nawsherwan, Xue M, et al. Impact of COVID-19 infection on pregnancy outcomes and the risk of maternal-to-neonatal intrapartum transmission of COVID-19 during natural birth. *Infect Control Hosp Epidemiol* [Internet]. 2020 Mar 19;(March):1–9. Available from: https://www.cambridge.org/core/product/identifier/S0899823X20000847/type/journal_article
60. Kirtsman M, Diambomba Y, Poutanen SM, Malinowski AK, Vlachodimitropoulou E, Parks WT, et al. Probable congenital SARS-CoV-2 infection in a neonate born to a woman with active SARS-CoV-2 infection. *Can Med Assoc J.* 2020;cmaj.200821.
61. Kuhrt K, McMicking J, Nanda S, Nelson-Piercy C, Shennan A. Placental abruption in a twin pregnancy at 32 weeks' gestation complicated by coronavirus disease 2019 without vertical transmission to the babies. *Am J Obstet Gynecol MFM* [Internet]. 2020 May;100135. Available from: <https://linkinghub.elsevier.com/retrieve/pii/S2589933320300781>
62. Lee DH, Lee J, Kim E, Woo K, Park HY, An J. Emergency cesarean section on severe acute respiratory syndrome coronavirus 2 (SARS- CoV-2) confirmed patient [published online ahead of print, 2020 Mar 31]. *Korean J Anesthesiol.* 2020;10.4097/kja.20116. doi:10.4097/kja.20116
63. Li J, Wang Y, Zeng Y, Song T, Pan X, Jia M, et al. Critically ill pregnant patient with COVID-19 and neonatal death within two hours of birth. *Int J Gynaecol Obstet.* 2020;(May):19–21.
64. Li Y, Zhao R, Zheng S, Chen X, Wang J, Sheng X, et al. Lack of Vertical Transmission of Severe Acute Respiratory Syndrome Coronavirus 2, China. *Emerg Infect Dis.* 2020;26(6):4–7.
65. Liao X, Yang H, Kong J, Yang H. Chest CT Findings in a Pregnant Patient with 2019 Novel Coronavirus Disease. *Balkan Med J* [Internet]. 2020 Mar 26;(March):2019–21. Available from: <http://balkanmedicaljournal.org/pdf.php?&id=2196>
66. Liu D, Li L, Wu X, Zheng D, Wang J, Yang L, et al. Pregnancy and Perinatal Outcomes of Women With Coronavirus Disease (COVID-19) Pneumonia: A Preliminary Analysis. *Am J Roentgenol* [Internet]. 2020 Mar 18;(July):1–6. Available from: <https://www.ajronline.org/doi/10.2214/AJR.20.23072>
67. Liu Y, Chen H, Tang K, Guo Y. Clinical manifestations and outcome of SARS-CoV-2 infection during pregnancy. *J Infect* [Internet]. 2020 Mar; Available from: <https://doi.org/10.1016/j.jinf.2020.02.028>
68. Lowe B, Bopp B. COVID-19 vaginal delivery – A case report. *Aust New Zeal J Obstet Gynaecol* [Internet]. 2020 May 28;ajo.13173. Available from: <https://onlinelibrary.wiley.com/doi/abs/10.1111/ajo.13173>
69. Lu D, Sang L, Du S, Li T, Chang Y, Yang XA. Asymptomatic COVID-19 infection in late pregnancy indicated no vertical transmission. *J Med Virol.* 2020;(March):1–5.
70. Lyra J, Valente R, Rosário M, Guimarães M. Cesarean Section in a Pregnant Woman with COVID-19: First Case in Portugal. *Acta Med Port.* 2020;33:1–3.
71. Mehta H, Ivanovic S, Cronin A, VanBrunt L, Mistry N, Miller R, et al. Novel coronavirus-related acute respiratory distress syndrome in a patient with twin pregnancy: A case report. *Case Reports Women's Heal* [Internet]. 2020;e00220. Available from: <https://doi.org/10.1016/j.crwh.2020.e00220>
72. Panichaya P, Thaweerat W, Uthaisan J. Prolonged viral persistence in COVID-19 second trimester pregnant patient. *Eur J Obstet Gynecol Reprod Biol* [Internet]. 2020; Available from: <http://www.ncbi.nlm.nih.gov/pubmed/32425299%0Ahttp://www.pubmedcentral.nih.gov/articlerender.fcgi?artid=PMC7233222>
73. Patanè L, Morotti D, Giunta MR, Sigismondi C, Piccoli MG, Frigerio L, et al. Vertical

- transmission of COVID-19: SARS-CoV-2 RNA on the fetal side of the placenta in pregnancies with COVID-19 positive mothers and neonates at birth. *Am J Obstet Gynecol MFM* [Internet]. 2020 May;100145. Available from: <https://linkinghub.elsevier.com/retrieve/pii/S2589933320300896>
74. Perrone S, Deolmi M, Giordano M, D'Alvano T, Gambini L, Corradi M, et al. Report of a series of healthy term newborns from convalescent mothers with COVID-19. *Acta Bio Medica Atenei Parm.* 2020;91(2):251–5.
 75. Piersigilli F, Carkeek K, Hocq C, van Grambezen B, Hubinont C, Chatzis O, et al. COVID-19 in a 26-week preterm neonate. *Lancet Child Adolesc Heal.* 2020;4642(20):19–21.
 76. Polónia-Valente R, Moucho M, Tavares M, Vilan A, Montenegro N, Rodrigues T. Vaginal delivery in a woman infected with SARS-CoV-2 – the first case reported in Portugal. *Eur J Obstet Gynecol Reprod Biol.* 2020;(2019):2019–20.
 77. Rosen MH, Axelrad J, Hudesman D, Rubin DT, Chang S. Management of Acute Severe Ulcerative Colitis in a Pregnant Woman With COVID-19 Infection: A Case Report and Review of the Literature. *Inflamm Bowel Dis.* 2020;XX(Xx):1–3.
 78. Schnettler WT, Al Ahwel Y, Suhag A. Severe ARDS in COVID-19-infected pregnancy: obstetric and intensive care considerations. *Am J Obstet Gynecol MFM* [Internet]. 2020;100120. Available from: <https://doi.org/10.1016/j.ajogmf.2020.100120>
 79. Shanes ED, Mithal LB, Otero S, Azad HA, Miller ES, Goldstein JA. Placental Pathology in COVID-19. *Am J Clin Pathol* [Internet]. 2020 May 22;1–10. Available from: <https://academic.oup.com/ajcp/advance-article/doi/10.1093/ajcp/aqaa089/5842018>
 80. Song L, Xiao W, Ling K, Yao S, Chen X. Anesthetic Management for Emergent Cesarean Delivery in a Parturient with Recent Diagnosis of Coronavirus Disease 2019 (COVID-19): A Case Report. *Transl Perioper & Pain Med* 2020; 7(3):234-237.
 81. Taghizadieh A, Mikaeili H, Ahmadi M, Valizadeh H. Acute kidney injury in pregnant women following SARS-CoV-2 infection: A case report from Iran. *Respir Med Case Reports* [Internet]. 2020;30:101090. Available from: <https://doi.org/10.1016/j.rmcr.2020.101090>
 82. Tang MW, Nur E, Biemond BJ. Immune Thrombocytopenia during Pregnancy due to COVID-19. *Am J Hematol* [Internet]. 2020; Available from: <http://www.ncbi.nlm.nih.gov/pubmed/32445584>
 83. Vallejo V, Ilagan JG. A Postpartum Death Due to Coronavirus Disease 2019 (COVID-19) in the United States. *Obstet Gynecol.* 2020;00(00):1–4.
 84. Vibert F, Kretz M, Thuet V, Barthel F, De Marcillac F, Deruelle P, et al. Prone positioning and high-flow oxygen improved respiratory function in a 25-week pregnant woman with COVID-19. *Eur J Obstet Gynecol Reprod Biol* [Internet]. 2020;(2019):2019–20. Available from: <https://doi.org/10.1016/j.ejogrb.2020.05.022>
 85. Vlachodimitropoulou Koumoutsea E, Vivanti AJ, Shehata N, Benachi A, Le Gouez A, Desconclois C, et al. COVID19 and acute coagulopathy in pregnancy. *J Thromb Haemost.* 2020;(4).
 86. Wang X, Zhou Z, Zhang J, Zhu F, Tang Y, Shen X. A case of 2019 Novel Coronavirus in a pregnant woman with preterm delivery [published online ahead of print, 2020 Feb 28]. *Clin Infect Dis.* 2020;ciaa200. doi:10.1093/cid/ciaa200
 87. Wen R, Sun Y, Xing QS. A patient with SARS-CoV-2 infection during pregnancy in Qingdao, China. *J Microbiol Immunol Infect* [Internet]. 2020;(xxxx):3–4. Available from: <https://doi.org/10.1016/j.jmii.2020.03.004>
 88. Wu Y, Liu C, Dong L, Zhang C, Chen Y, Liu J, et al. Viral Shedding of COVID-19 in Pregnant Women. *SSRN Electron J* [Internet]. 2020; Available from: <https://www.ssrn.com/abstract=3562059>
 89. Xia H, Zhao S, Wu Z, Luo H, Zhou C, Chen X. Emergency Caesarean delivery in a patient with confirmed coronavirus disease 2019 under spinal anaesthesia. *Br J Anaesth* [Internet]. 2020 Mar;(xxx):8–10. Available from:

- <https://doi.org/10.1016/j.bja.2020.02.016>
90. Yang P, Wang X, Liu P, Wei C, He B, Zheng J, et al. Clinical characteristics and risk assessment of newborns born to mothers with COVID-19. *J Clin Virol* [Internet]. 2020;127(March):104356. Available from: <https://doi.org/10.1016/j.jcv.2020.104356>
 91. Yassa M, Birol P, Mutlu AM, Tekin AB, Sandal K, Tug N. Lung Ultrasound Can Influence the Clinical Treatment of Pregnant Women With COVID-19. *J Ultrasound Med* [Internet]. 2020; Available from: <http://www.ncbi.nlm.nih.gov/pubmed/32478445>
 92. Yu N, Li W, Kang Q, Xiong Z, Wang S, Lin X, et al. Clinical features and obstetric and neonatal outcomes of pregnant patients with COVID-19 in Wuhan, China: a retrospective, single-centre, descriptive study. *Lancet Infect Dis* [Internet]. 2020;20(5):559–64. Available from: [http://dx.doi.org/10.1016/S1473-3099\(20\)30176-6](http://dx.doi.org/10.1016/S1473-3099(20)30176-6)
 93. Yu N, Li W, Kang Q, Zeng W, Feng L, Wu J. No SARS-CoV-2 detected in amniotic fluid in mid-pregnancy. *Lancet Infect Dis* [Internet]. 2020;3099(20):19–20. Available from: [http://dx.doi.org/10.1016/S1473-3099\(20\)30320-0](http://dx.doi.org/10.1016/S1473-3099(20)30320-0)
 94. Zamaniyan M, Ebadi A, Aghajanpoor Mir S, Rahmani Z, Haghshenas M, Azizi S. Preterm delivery in pregnant woman with critical COVID-19 pneumonia and vertical transmission. *Prenat Diagn*. 2020;
 95. Zambrano LI, Fuentes-Barahona IC, Bejarano-Torres DA, Bustillo C, Gonzales G, Vallecillo-Chinchilla G, et al. A pregnant woman with COVID-19 in Central America. *Travel Med Infect Dis* [Internet]. 2020 Mar;3099(March):101639. Available from: <https://doi.org/10.1016/j.tmaid.2020.101639>
 96. Zeng L, Xia S, Yuan W, Yan K, Xiao F, Shao J, et al. Neonatal Early-Onset Infection with SARS-CoV-2 in 33 Neonates Born to Mothers with COVID-19 in Wuhan, China. *JAMA Pediatr*. 2020;23(77):4–6.
 97. Zeng H, Xu C, Fan J, et al. Antibodies in Infants Born to Mothers With COVID-19 Pneumonia [published online ahead of print, 2020 Mar 26]. *JAMA*. 2020;323(18):1848-1849. doi:10.1001/jama.2020.4861
 98. Sutton D, Fuchs K, D'Alton M, Goffman D. Universal screening for sars-cov-2 in women admitted for delivery. *N Engl J Med*. 2020;382:2163-2164. doi:10.1056/NEJMc2009316
 99. Guan WJ, Ni ZY, Hu Y, Liang WH, Ou CQ, He JX, Liu L, Shan H, Lei CL, Hui DSC, Du B, Li LJ, Zeng G, Yuen KY, Chen RC, Tang CL, Wang T, Chen PY, Xiang J, Li SY, Wang JL, Liang ZJ, Peng YX, Wei L, Liu Y, Hu YH, Peng P, Wang JM, Liu JY, Chen Z, Li G, Zheng ZJ, Qiu SQ, Luo J, Ye CJ, Zhu SY, Zhong NS, China Medical Treatment Expert Group for C. Clinical characteristics of coronavirus disease 2019 in china. *N Engl J Med*. 2020;382:1708-1720. doi:10.1056/NEJMoa2002032
 100. Menni C, Valdes A, Freydin MB, et al. Loss of smell and taste in combination with other symptoms is a strong predictor of COVID-19 infection. *medRxiv* 2020:2020.2004.2005.20048421. doi:10.1101/2020.04.05.20048421
 101. Severe Outcomes Among Patients with Coronavirus Disease 2019 (COVID-19) – United States. *MMWR Mornb Mortal Wkly Rp* 2020. doi: 10.15585/mmwr.mm6912e2

Table 1. Summary and quality assessment of studies included in the quantitative synthesis

Author, year	Region/Country	Women with COVID-19	Included outcomes	Severe COVID-19*	Proportion receiving antiviral treatment and used regimen (combinations of listed drugs)	Maternal mortality	Newcastle-Ottawa Scale score and/or overall judgement
Pereira A, 2020	Madrid, Spain	60	Symptoms, maternal characteristics, laboratory parameters, pregnancy and neonatal outcomes	2/60	Hydroxychloroquine, lopinavir, ritonavir, darunavir, tocilizumab, cobicistat 30%, (21/60)	0/60	** * */**/*** High
Duffy C, 2020	Boston, USA	15	Laboratory parameters	Not extractable	Not reported	Not reported	Moderate
Lokken E, 2020	Washington, USA	46	Symptoms, maternal characteristics, laboratory parameters, pregnancy outcomes	7/46	Remdesivir, hydroxychloroquine, 6.5% (3/46)	0/46	High
Qadri F, 2020	Michigan, USA	16	Maternal characteristics, laboratory parameters, pregnancy and neonatal outcomes	2/16	Remdesivir, hydroxychloroquine, 12.5% (2/16)	0/16	High
Yan J, 2020	Within and outside of Hubei Province, China	65	Pregnancy and neonatal outcomes	6/65	Oseltamivir, ganciclovir, arbidol, peramivir, interferon, aciclovir, ribavirin, 9.2% (6/65)	0/65	High
Chen L, 2020	Hubei Province, Wuhan, China	84	Symptoms, maternal characteristics	Not extractable	Not reported	0/84	High

Andrikopoulou M, 2020	New York, USA	158	Maternal characteristics, laboratory parameters, maternal outcomes	Not extractable	Not reported	0/158	High
Knight M, 2020	National, UK	427	Symptoms, maternal characteristics, pregnancy and neonatal outcomes	Not reported	Oseltamivir, lopinavir, ritonavir 2.1% (9/427)	5/427	***/**/*** High
Williams R, 2020	New York, Philadelphia, New Jersey, Ohio, USA	64	Maternal characteristics, pregnancy and neonatal outcomes	64/64	Remdesivir, hydroxychloroquine, ~81% (52/64)	0/64	***/**/*** High
Savasi M, 2020	Lombardi, Italy	77	Symptoms, maternal characteristics, laboratory parameters, pregnancy and neonatal outcomes	14/77	Hydroxychloroquine, 29.7% (19/77)	0/77	***/**/*** High
London V, 2020	New York, USA	68	Symptoms, maternal characteristics, laboratory parameters, pregnancy and neonatal outcomes	Not extractable	Hydroxychloroquine, 20.6% (16/68)	0/68	***/**/*** High
Goldfarb I, 2020	Massachusetts, USA	61	Maternal characteristics, pregnancy and neonatal outcomes	Not reported	Not reported	0/61	***/**/*** High
Kayer G, 2020	National, France	617	Symptoms, maternal characteristics, pregnancy and neonatal outcomes	128/617	Not reported	1/617	***/**/*** High
Romagano M, 2020	New Jersey, USA	73	Maternal outcomes	Not extractable	Not extractable	0/73	Moderate

Mendoza M, 2020	Barcelona, Spain	42	Maternal characteristics, maternal outcomes	8/42	Not reported	0/42	***/**/** High
NethOSS registry, 2020	National, Netherlands	210	Symptoms, pregnancy and neonatal outcomes	Not reported	Remdesivir, Oseltamivir, 1.4% (3/210)	1/210	High
Brazilian registry, 2020	National, Netherlands	484	Symptoms, maternal characteristics, maternal outcomes	Not reported	Not specified, 42% (121/288)	36/484	High

PCR: polymerase chain reaction, COVID-19: coronavirus disease 2019

*As defined by individual studies

Table 2. Pooled proportions of presenting symptoms, maternal characteristics, laboratory findings, treatments and clinical outcomes in pregnant women with reverse transcription polymerase chain reaction (RT-PCR) confirmed SARS-CoV-2 infection.

	Studies (N)	Cases (n/N)	Proportion (95% CI)*	I²
Symptoms at presentation				
Asymptomatic	10	253/1205	14.5% (5.6-32.5%)	97.0%
Fever	10	1292/1987	63.3% (54.7-71.2%)	91.7%
Cough	10	1391/1987	71.4% (66.2-76.2%)	79.4%
Loss of taste or smell	3	194/635	22.9% (11.6-40.1%)	87.2%
Myalgia, limb or joint pain	4	104/640	18.9% (9.7-33.5%)	89.9%
Fatigue, tiredness	3	101/545	18.5% (15.5-22.0%)	0.0%
Headache	4	92/640	15.0% (8.9-24.1%)	78.4%
Shortness of breath	9	789/1941	34.4% (24.7-44.4%)	93.9%
Chest pain, tightness	2	30/170	17.5% (9.8-29.2%)	62.5%
Diarrhoea	6	126/1621	7.4% (5.4-10.0%)	58.8%
Maternal and pregnancy characteristics				
Maternal age >35 years	8	504/1524	30.6% (25.1-36.6%)	77.5%
Black, Asian or minority ethnic	9	621/1104	50.8% (38.3-63.2%)	92.3%
Obesity (BMI >30kg/m ²)	9	509/1725	38.2% (23.6-55.4%)	97.0%
Smoker	4	39/1155	3.3% (2.2-4.9%)	21.9%
Asthma	7	126/1661	8.8% (5.9-13.1%)	79.4%
Chronic hypertension	8	68/1710	4.2% (2.5-6.9%)	72.3%
Cardiac disease	2	26/715	3.2% (1.0-9.7%)	84.4%
Any comorbidity	5	252/776	32.5% (29.3-35.8%)	0.0%

Third trimester	8	900/1223	73.9% (63.7-82.1%)	91.4%
Laboratory findings†				
Raised D-dimer	2	77/91	84.6% (75.7-90.7%)	0.0%
Raised C-reactive protein or procalcitonin	6	144/351	54.0% (16.5-87.5%)	97.5%
Lymphopenia	7	143/444	34.2% (24.9-44.8%)	75.1%
Thrombocytopenia	3	7/259	3.2% (0.9-10.7%)	62.9%
Elevated AST levels	4	48/318	16.0% (10.7-23.2%)	48.8%
Treatments received				
Antiviral treatment	10	291/1321	21.1% (7.9-45.5%)	97.6%
Anticoagulation	2	69/141	51.1% (21.2-80.3%)	92.5%
Maternal complications				
Bacteria or viral co-infection¶	1	5/60	8.3% (3.5-18.5%)	-
Maternal intensive care unit admission	13	159/1591	7.0% (4.4-10.9%)	81.7%
Oxygen support (nasal or non-invasive ventilation)	10	295/1623	18.2% (9.8-31.1%)	95.5%
Intubation and mechanical ventilation	11	92/1680	3.4% (1.5-7.7%)	90.2%
Maternal ECMO	12	13/1896	0.7% (0.4-1.2%)	0.0%
Maternal death	14	43/2650	0.9% (0.3-2.9%)	84.4%
Obstetric outcomes				
Delivered cases	10	746/1650	52.4% (37.9-66.5%)	96.1%
Delivery due to COVID-19 related reasons	8	95/497	19.0% (8.9-36.0%)	89.4%
Delivery due to fetal distress	6	15/238	5.3% (2.3-11.8%)	40.2%

Preterm birth (any)	10	183/746	21.8% (14.6-31.3%)	82.3%
Spontaneous preterm birth	7	22/440	5.0% (3.3-7.5%)	0.0%
Medically indicated preterm birth	6	92/430	18.4% (8.3-35.8%)	87.4%
Preterm birth < 34 ⁺⁰ weeks	4	13/147	3.3% (0.2-31.9%)	87.0%
Caesarean delivery	10	390/746	48.3 (34.1-62.7%)	91.5%
<i>Perinatal outcomes</i>				
Perinatal death				
Stillbirth††	8	12/1362	0.9% (0.5-1.5%)	0.0%
Neonatal death	8	4/688	0.6% (0.2-1.5%)	0.0%
SARS-CoV-2 PCR positivity after delivery	9	4/688	1.4% (0.4-4.7%)	59.8%

AST: Aspartate Transaminase, ECMO: Extra-Corporeal Membrane Oxygenation, RT-PCR: reverse-transcription polymerase chain reaction, CI: confidence interval, n: numerator, N: denominator.

* Random-intercept logistic regression meta-analysis with continuity correction.

† Abnormal according to local reference range

¶ Any bacterial or viral respiratory pathogen (mycoplasma, influenza, respiratory syncytial virus, etc.).

†† When total births were used as the denominator, the rate of stillbirth was 16.1 per 1000 births.



Figure 1. PRISMA 2009 Flow Diagram

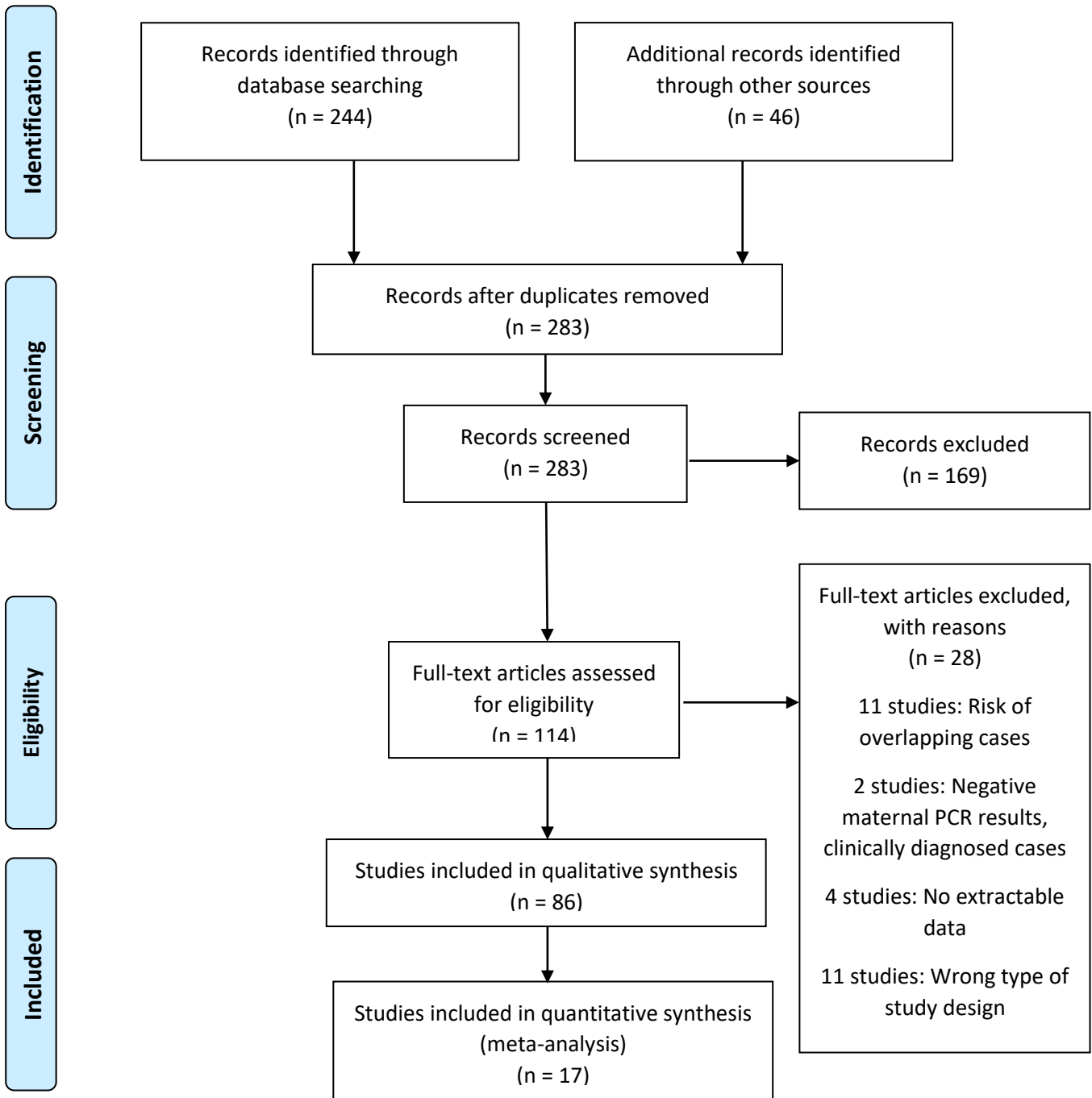
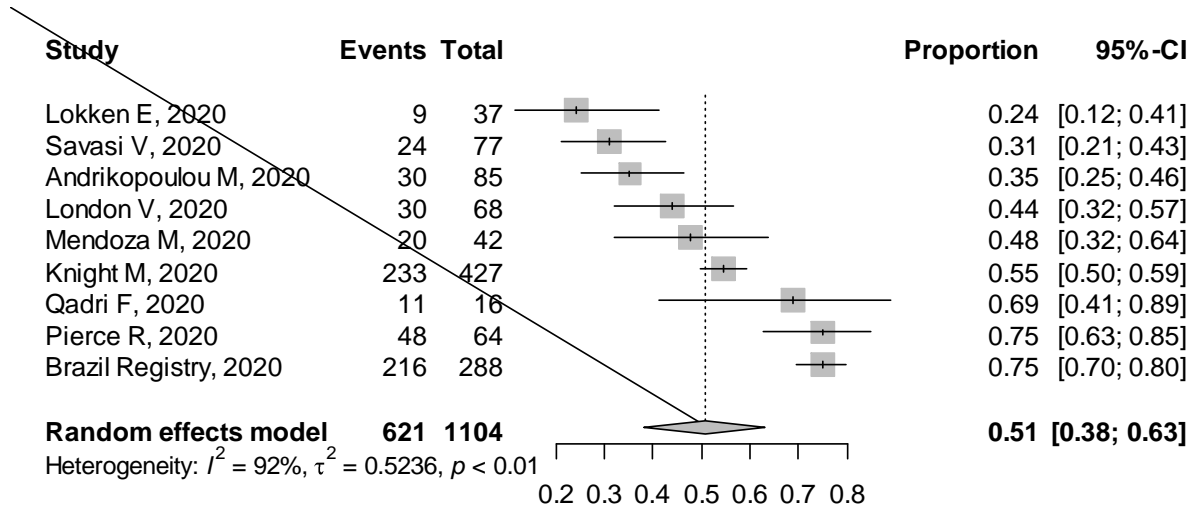
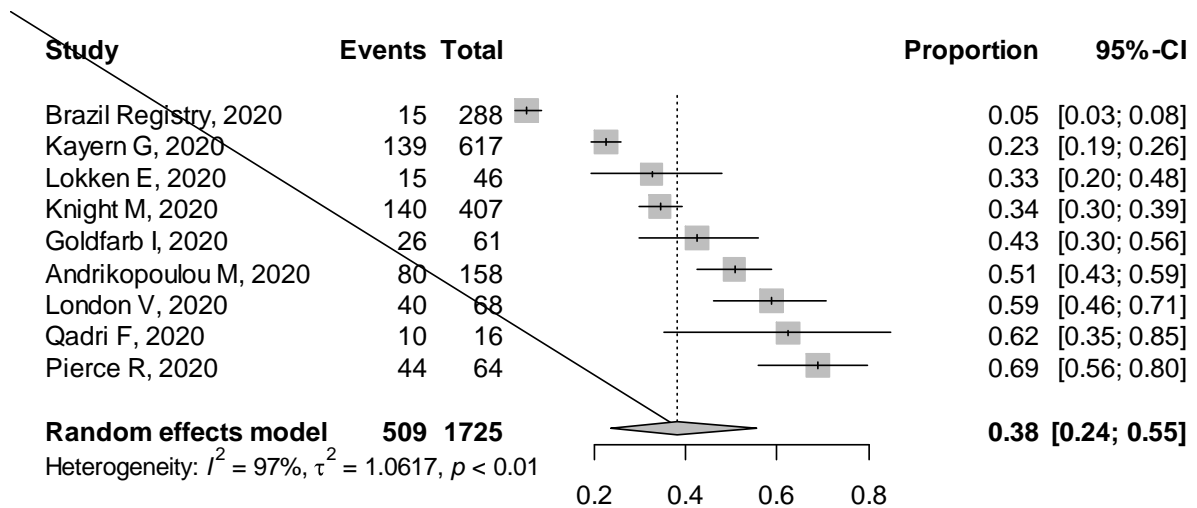


Figure 2. Forest plot of pooled proportion of (a) black, Asian or minority ethnic, (b) obesity and (c) chronic co-morbidities in pregnant women with confirmed COVID-19

(a)



(b)



(c)

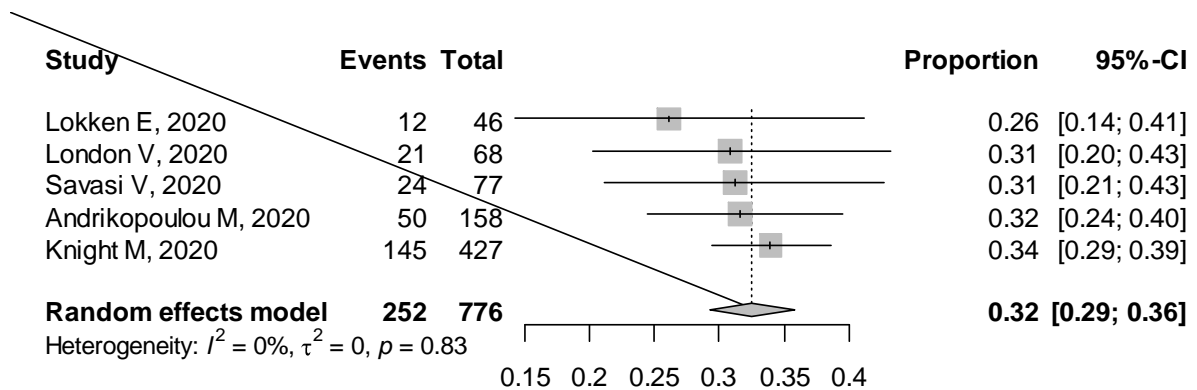


Figure 3. Forest plot of pooled proportion of maternal intensive care unit admission in pregnant women with confirmed COVID-19

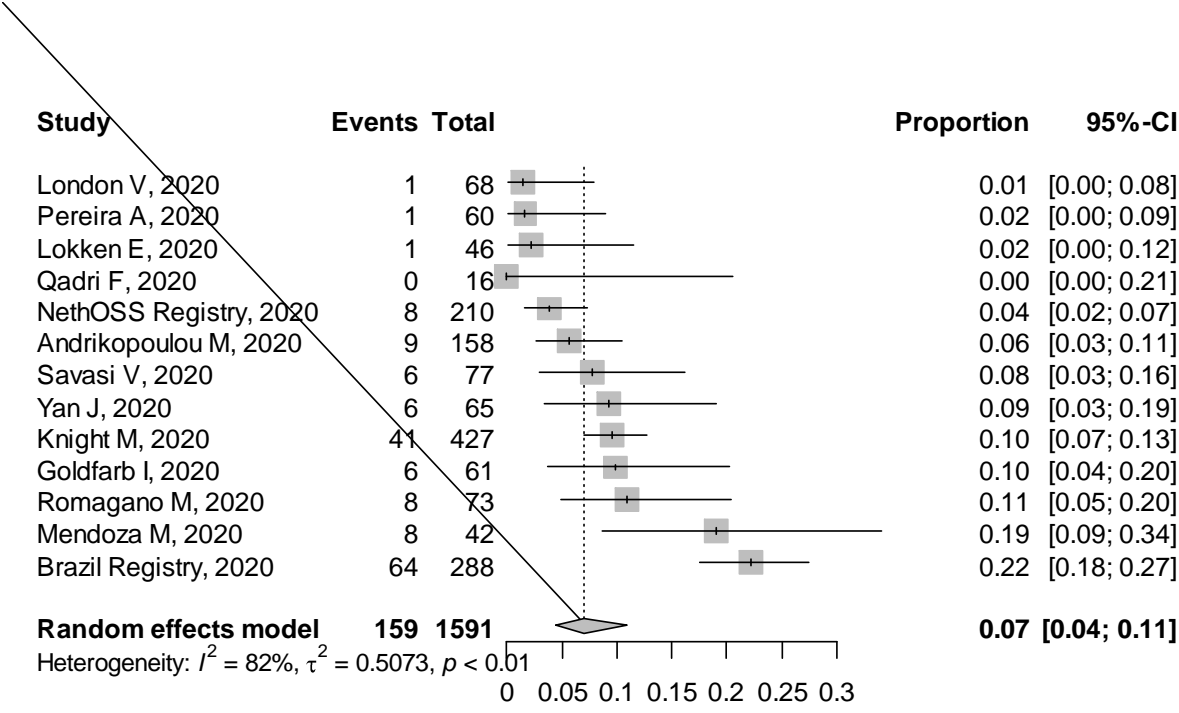
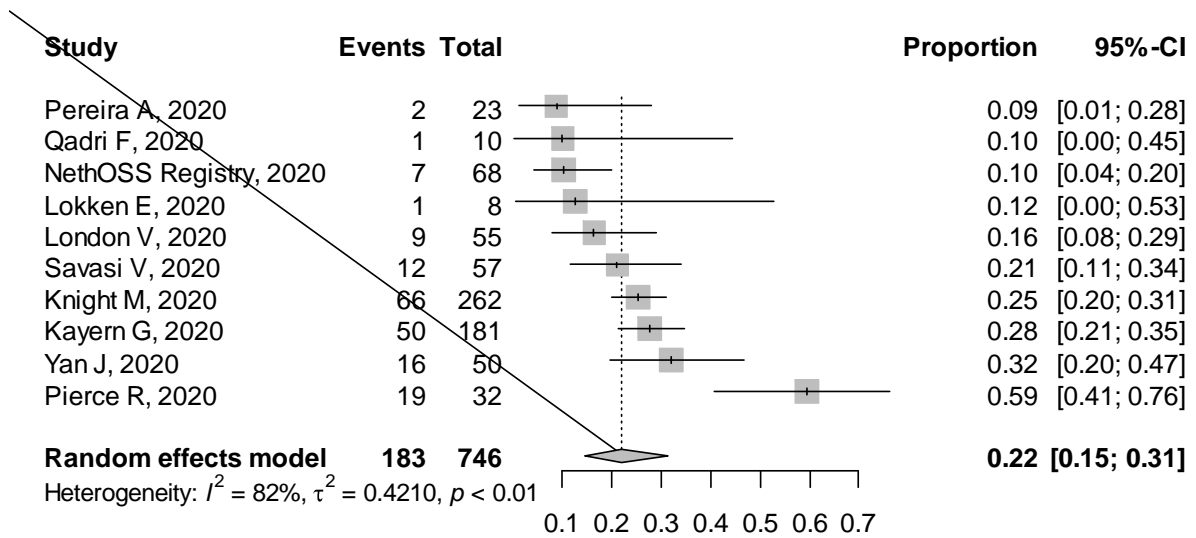
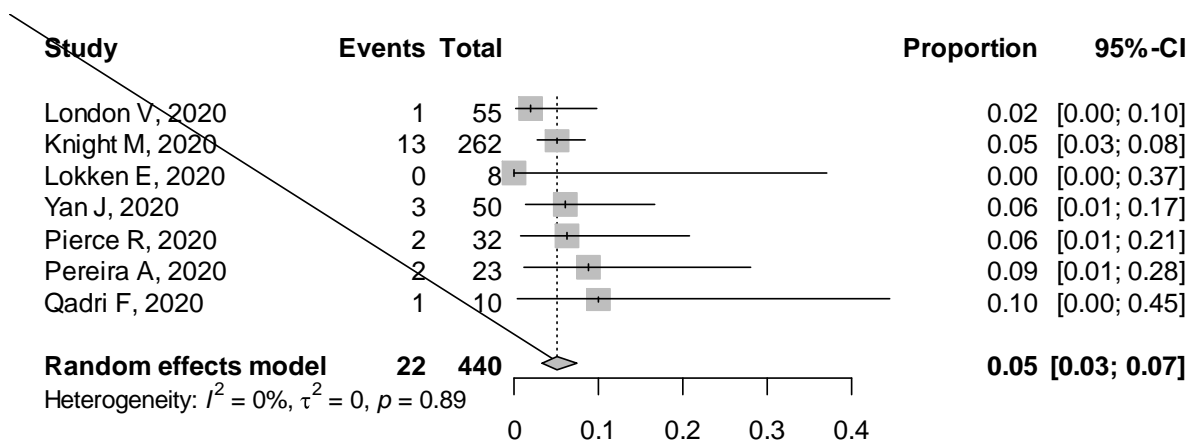


Figure 4. Forest plots of pooled proportion of (a) preterm birth, (b) spontaneous and (c) medically indicated preterm birth, and (d) caesarean section in pregnant women with confirmed SARS-CoV-2 infection

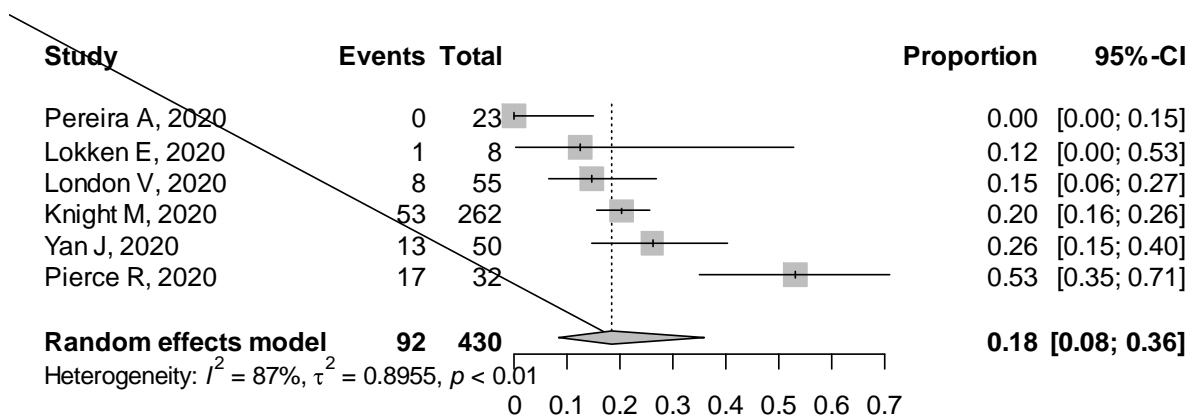
(a)



(b)



(c)



(d)

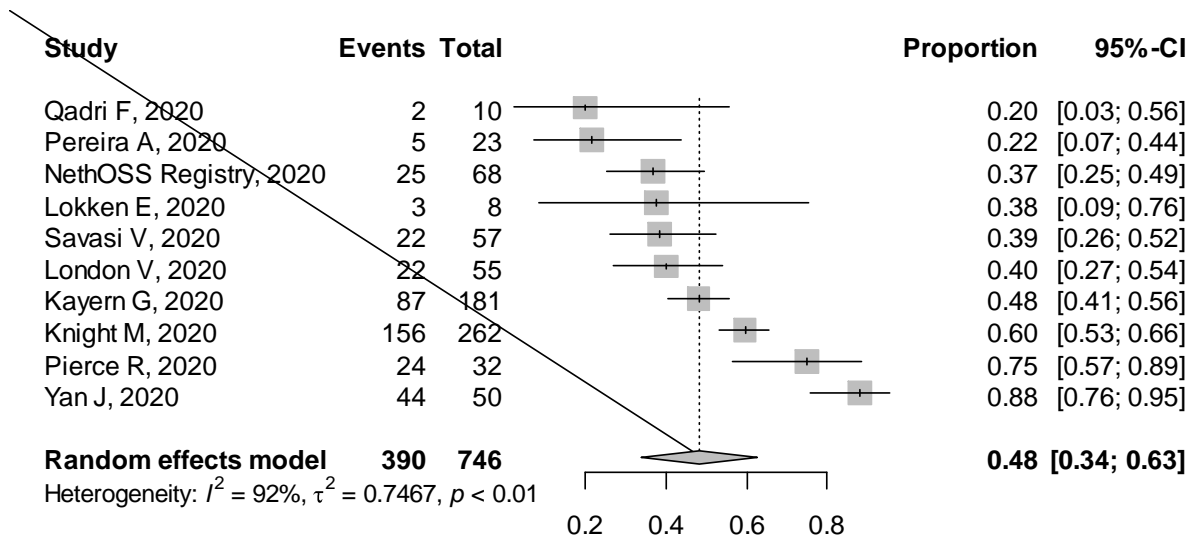
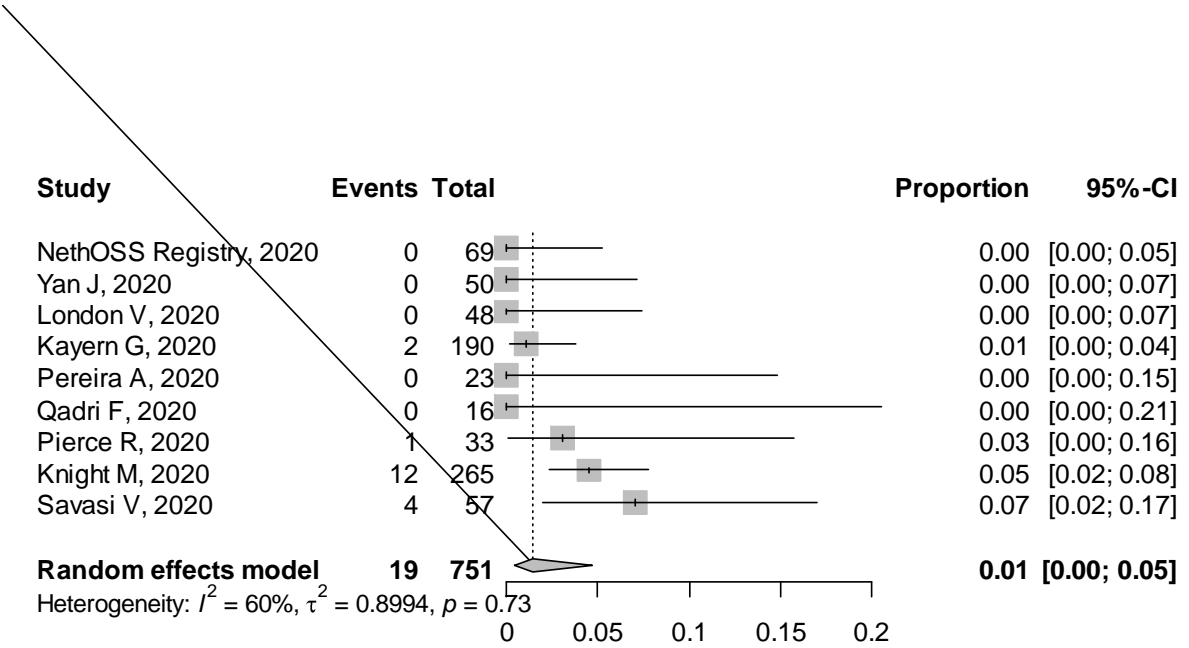


Figure 5. Forest plot of pooled proportion of neonatal SARS-CoV-2 positivity in babies born to women with confirmed COVID-19



Supplementary Table 1. Search Strategy

Databases: Embase®, MEDLINE®

Set#	Searched for	Results
S7	s6 not (rtype.exact("Conference Abstract") or ti(porcine or sow or sows or piglet or piglets or pig or pigs))	244
S6	s1 and (s2 or s3 or s4 or s5) and pd(2019-2020)	253
S5	ti,ab(pregnan[*4] or trimester[*1]) OR su(pregnan[*4] or trimester[*1])	2085528
S4	EMB.EXACT.EXPLODE("pregnancy") OR EMB.EXACT.EXPLODE("multiple pregnancy") OR EMB.EXACT("prolonged pregnancy") OR EMB.EXACT.EXPLODE("pregnancy complication") OR EMB.EXACT("high risk pregnancy") OR EMB.EXACT.EXPLODE("ectopic pregnancy") OR EMB.EXACT("pregnancy disorder") OR EMB.EXACT("pregnancy rate") OR EMB.EXACT("early pregnancy factor") OR EMB.EXACT("pregnant woman") OR EMB.EXACT("pregnancy outcome")	978803
S3	MESH.EXACT.EXPLODE("Pregnancy") OR MESH.EXACT.EXPLODE("Pregnancy Complications") OR MESH.EXACT("Pregnancy Rate") OR MESH.EXACT.EXPLODE("Pregnancy Trimesters") OR MESH.EXACT("Pregnancy, High-Risk") OR MESH.EXACT.EXPLODE("Pregnancy, Multiple") OR MESH.EXACT("Pregnancy, Heterotopic") OR MESH.EXACT("Pregnancy, Prolonged") OR MESH.EXACT.EXPLODE("Pregnancy, Ectopic") OR MESH.EXACT("Pregnant Women") OR MESH.EXACT("Pregnancy, Unplanned") OR MESH.EXACT("Pregnancy, Unwanted") OR MESH.EXACT.EXPLODE("Pregnancy Outcome")	920722
S2	MESH.EXACT.EXPLODE("Pregnancy") OR MESH.EXACT.EXPLODE("Pregnancy Complications") OR MESH.EXACT("Pregnancy Rate") OR MESH.EXACT.EXPLODE("Pregnancy Trimesters") OR MESH.EXACT("Pregnancy, High-Risk") OR MESH.EXACT.EXPLODE("Pregnancy, Multiple") OR MESH.EXACT("Pregnancy, Heterotopic") OR MESH.EXACT("Pregnancy, Prolonged") OR MESH.EXACT.EXPLODE("Pregnancy, Ectopic") OR MESH.EXACT("Pregnant Women") OR MESH.EXACT("Pregnancy, Unplanned") OR MESH.EXACT("Pregnancy, Unwanted") OR MESH.EXACT.EXPLODE("Pregnancy Outcome")	920722
S1	ti(coronavirus* or "corona virus*") or "novel coronavirus*" or "novel corona virus*" or "covid 19" or covid19 or "2019 ncov" or "sars cov 2" or "sars cov2" or ((coronavirus or "corona virus") pre/3 (2019 or 19)) or "sars coronavirus 2" or "sars corona virus 2" or MESH.EXACT("Coronavirus") OR MESH.EXACT("Coronavirus Infections") OR EMB.EXACT("Coronavirinae") OR	35922

	EMB.EXACT("Coronavirus infection") OR su.exact("coronaviruses")	
--	---	--

Supplementary Table 2. List of excluded studies with reasons for exclusion

First Author	Reason for exclusion	Reference
Breslin et al., 2020	Same authors' larger series available, risk of overlapping	Breslin N, Baptiste C, Gyamfi-Bannerman C, et al. COVID-19 infection among asymptomatic and symptomatic pregnant women: Two weeks of confirmed presentations to an affiliated pair of New York City hospitals [published online ahead of print, 2020 Apr 9]. <i>Am J Obstet Gynecol MFM</i> . 2020;2(2):100118. doi:10.1016/j.ajogmf.2020.100118
Nie et al., 2020	Risk of overlapping	Nie R, Wang S-s, Yang Q, Fan C-f, Liu Y-l, He W-c, Jiang M, Liu C-c, Zeng W-j, Wu J-l, Oktay K, Feng L, Jin L. Clinical features and the maternal and neonatal outcomes of pregnant women with coronavirus disease 2019. <i>medRxiv</i> . 2020:2020.2003.2022.20041061. doi:10.1101/2020.03.22.20041061
Yue et al., 2020	Risk of overlapping	Yue L, Han L, Li Q, Zhong M, Wang J, Wan Z, Chu C, Zeng Y, Peng M, Yang L, Li N. Anaesthesia and infection control in cesarean section of pregnant women with coronavirus disease 2019 (covid-19). <i>medRxiv</i> . 2020:2020.2003.2023.20040394. doi:10.1101/2020.03.23.20040394
Chen et al. 2020	Risk of overlapping	Chen R, Zhang Y, Huang L, Cheng B-h, Xia Z-y, Meng Q-t. Safety and efficacy of different anesthetic regimens for parturients with covid-19 undergoing cesarean delivery: A case series of 17 patients. <i>Canadian Journal of Anesthesia/Journal canadien d'anesthésie</i> . 2020;67:655-663. doi:10.1007/s12630-020-01630-7
Liu et al., 2020	Risk of overlapping	Liu W, Wang Q, Zhang Q, Chen L, Chen J, Zhang B et al. Coronavirus Disease 2019 (COVID-19) During Pregnancy: A Case Series. <i>Preprints</i> 2020 , 2020020373
Zhu et al., 2020	Risk of overlapping	Zhu H, Wang L, Fang C, et al. Clinical analysis of 10 neonates born to mothers with 2019-nCoV pneumonia. <i>Transl Pediatr</i> . 2020;9(1):51-60. doi:10.21037/tp.2020.02.06
Zhongy et al., 2020	No extractable data	Zhong Q, Liu YY, Luo Q, et al. Spinal anaesthesia for patients with coronavirus disease 2019 and possible transmission rates in anaesthetists: retrospective, single-centre, observational cohort study. <i>Br J Anaesth</i> . 2020;124(6):670-675. doi:10.1016/j.bja.2020.03.007
Chen et al.,	Negative	Chen Y, Li Z, Zhang YY, Zhao WH, Yu ZY. Maternal health

2020	PCR results	care management during the outbreak of coronavirus disease 2019 [published online ahead of print, 2020 Mar 26]. <i>J Med Virol.</i> 2020;10.1002/jmv.25787. doi:10.1002/jmv.25787
Wang et al., 2020	Risk of overlapping	Wang S, Guo L, Chen L, et al. A case report of neonatal COVID-19 infection in China [published online ahead of print, 2020 Mar 12]. <i>Clin Infect Dis.</i> 2020;ciaa225. doi:10.1093/cid/ciaa225
Lu et al., 2020	Negative PCR results, no extractable data	Zhang L, Jiang Y, Wei M, et al. <i>Zhonghua Fu Chan Ke Za Zhi.</i> 2020;55(3):166-171. doi:10.3760/cma.j.cn112141-20200218-00111
Li et al., 2020	Risk of overlapping	Li N, Han L, Peng M, et al. Maternal and neonatal outcomes of pregnant women with COVID-19 pneumonia: a case-control study [published online ahead of print, 2020 Mar 30]. <i>Clin Infect Dis.</i> 2020;ciaa352. doi:10.1093/cid/ciaa352
Fox et al, 2020	No extractable data	Fox A, Marino J, Amanat F, Krammer F, Hahn-Holbrook J, Zolla-Pazner S, Powell RL. Evidence of a significant secretory-iga-dominant sars-cov-2 immune response in human milk following recovery from covid-19. <i>medRxiv.</i> 2020:2020.2005.2004.20089995. doi:10.1101/2020.05.04.20089995
Docherty et al., 2020	No extractable data	Docherty AB, Harrison EM, Green CA, Hardwick HE, Pius R, Norman L, Holden KA, Read JM, Dondelinger F, Carson G, Merson L, Lee J, Plotkin D, Sigfrid L, Halpin S, Jackson C, Gamble C, Horby PW, Nguyen-Van-Tam JS, Ho A, Russell CD, Dunning J, Openshaw PJ, Baillie JK, Semple MG. Features of 20 133 uk patients in hospital with covid-19 using the isaric who clinical characterisation protocol: Prospective observational cohort study. <i>BMJ.</i> 2020;369:m1985. doi:10.1136/bmj.m1985
Tekbali et al., 2020	Risk of overlapping	Tekbali A, Grünebaum A, Saraya A, McCullough L, Bornstein E, Chervenak FA. Pregnant vs nonpregnant severe acute respiratory syndrome coronavirus 2 and coronavirus disease 2019 hospital admissions: the first 4 weeks in New York [published online ahead of print, 2020 Apr 15]. <i>Am J Obstet Gynecol.</i> 2020;S0002-9378(20)30437-3. doi:10.1016/j.ajog.2020.04.012
Rachelson	Risk of	Rochelson B, Nimaroff M, Combs A, et al. The care of pregnant

et al., 2020	overlapping	women during the COVID-19 pandemic - response of a large health system in metropolitan New York [published online ahead of print, 2020 May 20]. <i>J Perinat Med.</i> 2020;/j/jpme.ahead-of-print/jpm-2020-0175/jpm-2020-0175.xml. doi:10.1515/jpm-2020-0175
Ferrazzi et al., 2020	No extractable data	Ferrazzi EM, Frigerio L, Cetin I, et al. COVID-19 Obstetrics Task Force, Lombardy, Italy: Executive management summary and short report of outcome. <i>Int J Gynaecol Obstet.</i> 2020;149(3):377-378. doi:10.1002/ijgo.13162
Bianco et al., 2020	Wrong type of study	Bianco A, Buckley AB, Overbey J, et al. Testing of Patients and Support Persons for Coronavirus Disease 2019 (COVID-19) Infection Before Scheduled Deliveries [published online ahead of print, 2020 May 19]. <i>Obstet Gynecol</i> .2020; 10.1097/AOG.0000000000003985. doi:10.1097/AOG.0000000000003985
Buckley et al., 2020	Wrong type of study	Buckley A, Bianco A, Stone J. Universal testing of patients and their support persons for COVID-19 when presenting for admission to Labor and Delivery within the Mount Sinai Health System [published online ahead of print, 2020 May 22]. <i>Am J Obstet Gynecol MFM.</i> 2020;100147. doi:10.1016/j.ajogmf.2020.100147
Ceulemans et al., 2020	Wrong type of study	Ceulemans D, Thijs I, Schreurs A, et al. Screening for COVID-19 at childbirth: does it deliver? [published online ahead of print, 2020 May 25]. <i>Ultrasound Obstet Gynecol.</i> 2020;10.1002/uog.22099. doi:10.1002/uog.22099
Sutton et al., 2020	Wrong type of study	Sutton D, Fuchs K, D'Alton M, Goffman D. Universal Screening for SARS-CoV-2 in Women Admitted for Delivery. <i>N Engl J Med.</i> 2020;382(22):2163-2164. doi:10.1056/NEJMc2009316
Miller et al., 2020	Wrong type of study	Miller, Emily S. MD, MPH; Grobman, William A. MD, MBA; Sakowicz, Allie MS; Rosati, Jessica MSN, RN; Peaceman, Alan M. MD Clinical Implications of Universal Severe Acute Respiratory Syndrome Coronavirus 2 (SARS-CoV-2) Testing in Pregnancy, <i>Obstetrics & Gynecology</i> : May 19, 2020 - Volume Publish Ahead of Print - Issue - doi: 10.1097/AOG.0000000000003983

Campbell et al., 2020	Wrong type of study	Campbell KH, Tornatore JM, Lawrence KE, et al. Prevalence of SARS-CoV-2 Among Patients Admitted for Childbirth in Southern Connecticut [published online ahead of print, 2020 May 26]. <i>JAMA</i> .2020;e208904. doi:10.1001/jama.2020.8904
Khalil et al., 2020	Wrong type of study	Khalil A, Hill R, Ladhani S, Pattison K, O'Brien P. COVID-19 screening of health-care workers in a London maternity hospital [published online ahead of print, 2020 May 18]. <i>Lancet Infect Dis</i> . 2020;S1473-3099(20)30403-5. doi:10.1016/S1473-3099(20)30403-5
Lacourse et al., 2020	Wrong type of study	LaCourse SM, Kachikis A, Blain M, et al. Low prevalence of SARS-CoV-2 among pregnant and postpartum patients with universal screening in Seattle, Washington [published online ahead of print, 2020 May 30]. <i>Clin Infect Dis</i> . 2020;ciaa675. doi:10.1093/cid/ciaa675
Gagliardi et al., 2020	Wrong type of study	Gagliardi L, Danieli R, Suriano G, et al. Universal SARS-CoV-2 testing of pregnant women admitted for delivery in two Italian regions [published online ahead of print, 2020 May 11]. <i>Am J Obstet Gynecol</i> . 2020;S0002-9378(20)30542-1. doi:10.1016/j.ajog.2020.05.017
Naqwi et al., 2020	Wrong type of study	Naqvi M, Burwick RM, Ozimek JA, Greene NH, Kilpatrick SJ, Wong MS. Severe Acute Respiratory Syndrome Coronavirus 2 (SARS-CoV-2) Universal Testing Experience on a Los Angeles Labor and Delivery Unit [published online ahead of print, 2020 May 19]. <i>Obstet Gynecol</i> . 2020;10.1097/AOG.0000000000003987. doi:10.1097/AOG.0000000000003987
Vintzilleos et al., 2020	Wrong type of study	Vintzileos WS, Muscat J, Hoffmann E, et al. Screening all pregnant women admitted to labor and delivery for the virus responsible for coronavirus disease 2019 [published online ahead of print, 2020 Apr 26]. <i>Am J Obstet Gynecol</i> . 2020;S0002-9378(20)30472-5. doi:10.1016/j.ajog.2020.04.024
Karami et., 2020	Risk of overlapping	Karami P, Naghavi M, Feyzi A, et al. WITHDRAWN: Mortality of a pregnant patient diagnosed with COVID-19: A case report with clinical, radiological, and histopathological findings [published online ahead of print, 2020 Apr 11]. <i>Travel Med</i>

		<i>Infect Dis.</i> 2020;101665. doi:10.1016/j.tmaid.2020.101665
--	--	---

Supplementary Table 3. Publication bias assessment of outcomes with more than 10 reporting studies.

Outcome	Bias (standard error)	P value
Fever	-0.45 (2.51)	0.861
Cough	1.42 (1.83)	0.459
Antiviral treatment	-3.82 (3.23)	0.270
Maternal intensive care unit admission	-2.61 (0.88)	0.013
Oxygen support (nasal or non-invasive ventilation)	0.10 (2.65)	0.969
Intubation and mechanical ventilation	-1.82 (1.30)	0.192
Maternal extracorporeal membrane oxygenation	-0.16 (0.32)	0.607
Maternal death	-2.85 (0.50)	<0.001
Delivered cases	2.95 (2.94)	0.344
Preterm birth (any)	-1.10 (1.15)	0.366
Caesarean delivery	-0.95 (1.61)	0.571

Supplementary Table 4. Meta-regression results for maternal intensive care unit admission, maternal death and neonatal SARS-CoV-2 positivity. The variables in bold (*) adequately explain the heterogeneity in proportion meta-analyses (significant P value for beta and insignificant p value for residual heterogeneity). Positive beta coefficients indicate a positive correlation between the variable and the outcome, while negative coefficients indicate a negative correlation.

	Beta (standard error)	P value (Beta)	P value (residual heterogeneity)
<i>Maternal intensive care unit admission</i>			
- Maternal age >35 years*	0.007 (0.002)	<0.01	0.433
- Third trimester pregnancy	0.005 (0.003)	>0.05	<0.001
- Obesity	0.003 (0.008)	>0.005	<0.001
- BAME	0.005 (0.002)	>0.05	<0.001
- Comorbidities*	0.007 (0.003)	<0.05	0.254
<i>Maternal death</i>			
- Maternal age >35	0.0003 (0.004)	>0.05	0.581
- Third trimester pregnancy	0.004 (0.008)	>0.05	<0.001

- Obesity	-0.015 (0.01)	>0.05	0.010
- BAME	0.007 (0.007)	>0.05	<0.001
- Comorbidities	0.005 (0.007)	>0.05	0.512
- Antiviral treatment*	0.026 (0.003)	<0.001	0.891
Neonatal SARS-CoV-2 PCR positivity			
- Maternal age >35 years	0.005 (0.007)	>0.05	0.040
- Third trimester pregnancy	0.001 (0.001)	>0.05	0.085
- Obesity	0.011 (0.011)	>0.05	0.070
- BAME	0.001 (0.002)	>0.05	0.102
- Comorbidities	0.001 (0.005)	>0.05	0.025
- Vaginal birth	0.012 (0.013)	>0.05	0.018
- Spontaneous preterm birth*	0.19 (0.09)	<0.05	0.509

BAME: Black, Asian, Minority Ethnic, PCR: polymerase chain reaction

Supplementary Table 5. Characteristics of small case reports and series studies included in the qualitative synthesis (n=69). Two large studies included in the quantitative synthesis are also included here for placental pathology or polymerase chain reaction test results.

Author, year	Study type	Number of women	Maternal mortality (N)	Neonatal mortality (N)	Maternal positive PCR results			Products of conception positive PCR results			Placental pathology findings available
					Milk	Stool	Vaginal	Placenta	Amnion	Cord blood	
Ahmed et al., 2020	Case report	1	1	0	NA	NA	NA	NA	NA	NA	No
Alzamora et al., 2020	Case report	1	0	0	NA	NA	NA	NA	NA	NA	No
Anderson et al., 2020	Case report	1	0	0	NA	NA	NA	NA	NA	NA	No
Baergen et al., 2020	Descriptive	20	0	0	NA	NA	NA	NA	NA	NA	Yes
Baud et al., 2020	Case report	1	0	0	NA	NA	NA	1	NA	NA	Yes
Blauvelt et al., 2020	Case report	1	0	0	NA	NA	NA	NA	NA	NA	No
Browne et al., 2020	Case report	1	0	0	NA	NA	NA	NA	NA	NA	No
Buonsenso et al., 2020	Case series	7	0	0	NA	NA	NA	NA	NA	NA	No
Buonsenso et al., 2020	Case series	4	0	0	NA	NA	NA	NA	NA	NA	No

Carraso et al., 2020	Case report	1	0	0	NA	NA	NA	0	0	1	No
Chen et al., 2020	Case series	3	0	0	NA	NA	NA	0	NA	NA	Yes
Chen et al., 2020	Case series	9	0	0	0	NA	NA	NA	0	0	No
Chen et al., 2020	Case series	5	0	0	NA	NA	NA	NA	NA	NA	No
Cooke et al., 2020	Case report	2	0	0	NA	NA	NA	NA	NA	NA	No
Dong et al., 2020	Case report	1	0	0	0	0	NA	NA	NA	NA	No
Doria et al., 2020	Case series	12	0	0	NA	NA	NA	NA	NA	NA	No
Dumpa et al., 2020	Case report	1	0	0	NA	NA	NA	NA	NA	NA	No
Fan et al., 2020	Case report	2	0	0	0	NA	0	0	0	0	No
Gidlöf et al., 2020	Case report	1	0	0	0	NA	0	NA	NA	NA	No
Gonzalez et al., 2020	Case report	1	0	0	NA	NA	NA	NA	NA	NA	No
Govind et al., 2020	Case series	9	0	0	NA	NA	NA	NA	NA	NA	No

Groß et al., 2020	Case report	2	0	0	1	NA	NA	NA	NA	NA	No
Hantoushzadeh et al., 2020	Case series	9	7	6	NA	NA	NA	NA	NA	NA	No
Hirschberg et al., 2020	Case series	5	0	0	NA	NA	NA	NA	NA	NA	No
Hong et al., 2020	Case report	1	0	0	NA	NA	NA	NA	NA	NA	No
Inchingolo et al., 2020	Case report	1	0	0	NA	NA	NA	NA	NA	NA	No
Iqbal et al., 2020	Case report	1	0	0	NA	NA	NA	NA	NA	NA	No
Joudi et al., 2020	Case report	1	0	0	NA	NA	NA	NA	NA	NA	No
Juusela et al., 2020	Case report	2	0	0	NA	NA	NA	NA	NA	NA	No
Kalafat et al., 2020	Case report	1	0	0	0	NA	NA	0	NA	0	No
Khan et al., 2020	Case series	3	0	0	NA	NA	NA	NA	NA	NA	No
Kirtsman et al., 2020	Case report	1	0	0	NA	NA	NA	0	NA	NA	Yes
Kuhr et al., 2020	Case report	1	0	0	NA	NA	NA	NA	NA	NA	No

Lee et al., 2020	Case report	1	0	0	NA	NA	NA	0	0	0	No
Li et al., 2020	Case report	1	0	1	NA	NA	NA	NA	NA	NA	No
Li et al., 2020	Case report	1	0	0	0	0	NA	NA	NA	NA	No
Liao et al., 2020	Case report	1	0	0	NA	NA	NA	NA	NA	NA	No
Liu et al., 2020	Case series	15	0	0	NA	NA	NA	NA	NA	NA	No
Liu et al., 2020	Case series	13	0	0	NA	NA	NA	NA	NA	NA	No
Lokken et al., 2020	Descriptive	1	1	1	0	0	0	0	NA	NA	Yes
Lowe et al., 2020	Case report	1	0	0	NA	NA	NA	NA	NA	NA	No
Lu et al., 2020	Case report	1	0	0	NA	NA	NA	NA	NA	NA	No
Lyra et al., 2020	Case report	1	0	0	NA	NA	NA	NA	NA	NA	No
Mehta et al., 2020	Case report	1	0	0	NA	NA	NA	NA	NA	NA	No
Pancihaya et al., 2020	Case report	1	0	0	NA	NA	NA	0	0	0	Yes
Patane et al., 2020	Descriptive	22	0	0	NA	NA	NA	2	NA	NA	Yes

Pereira et al. 2020	Descriptive	6	NA	NA	NA	NA	NA	0	0	0	No
Perrone et al., 2020	Case series	4	0	0	NA	NA	NA	0	NA	NA	No
Piersigilli et al., 2020	Case report	1	0	0	NA	NA	NA	NA	NA	NA	No
Polonia-Valente et al., 2020	Case report	1	0	0	NA	NA	NA	NA	NA	NA	No
Rosen et al., 2020	Case report	1	0	0	NA	NA	NA	NA	NA	NA	No
Schnettler et al., 2020	Case report	1	0	0	NA	NA	NA	NA	NA	NA	No
Shanes et al., 2020	Case series	16	0	0	NA	NA	NA	NA	NA	NA	Yes
Song et al., 2020	Case report	1	0	0	NA	1	NA	NA	NA	NA	No
Taghizadieh et al., 2020	Case report	1	0	0	NA	NA	NA	NA	NA	NA	No
Tang et al., 2020	Case report	1	0	0	NA	NA	NA	NA	NA	NA	No
Vallejo et al., 2020	Case report	1	0	0	NA	NA	NA	NA	NA	NA	No
Vilbert et al., 2020	Case report	1	0	0	NA	NA	NA	NA	NA	NA	No
Vlachodimitrop et al.,	Case	2	0	0	NA	NA	NA	NA	NA	NA	No

2020	report										
Wang et al., 2020	Case report	1	0	0	NA	NA	NA	0	0	0	No
Wen et al., 2020	Case report	1	0	0	NA	NA	NA	NA	NA	NA	No
Wu et. al, 2020	Case series	13	0	0	1	1	0	NA	NA	NA	No
Xia et al., 2020	Case report	1	0	0	NA	NA	NA	NA	NA	NA	No
Yang et al., 2020	Case series	7	0	0	NA	NA	NA	NA	NA	NA	No
Yassa et al., 2020	Case series	8	0	0	NA	NA	NA	NA	NA	NA	No
Yu et al., 2020	Case report	2	0	0	NA	NA	NA	NA	0	NA	No
Yu et al., 2020	Case series	7	0	0	NA	NA	NA	NA	NA	NA	No
Zamaniyen et al., 2020	Case report	1	1	0	NA	NA	NA	0	1	NA	No
Zambrano et al., 2020	Case report	1	0	0	NA	NA	NA	NA	NA	NA	No
Zeng et al., 2020	Case series	6	0	0	NA	NA	NA	NA	NA	NA	No
Zeng et al., 2020	Descriptive	33	0	0	NA	NA	NA	NA	NA	NA	No

Summary	290	10	8	2/30	2/16	0/16	3/28	1/18	1/16	
----------------	-----	----	---	------	------	------	------	------	------	--

Supplementary Table 6. Narrative aggregate summaries of placental pathology findings

Placental histopathology findings*	Percentage (n/N) †
- Fetal or maternal malperfusion lesions	78.6% (33/42‡)
- Acute or chronic inflammatory changes	20% (13/65)

*Categorised as described in Shanes et al. 2020

†Number of placentas

‡One study not included due to reporting only on inflammatory changes